

The latest news on what's powering our neighborhoods



Spring into energy savings

As we refresh our homes and prepare to welcome warmer weather, there are small and big tasks that can help make your home more efficient. Whether it's ...

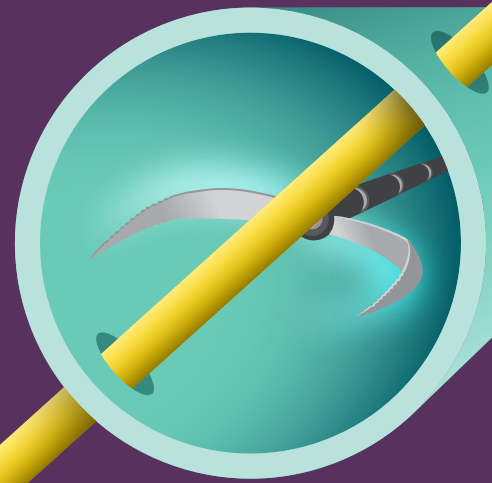
- Putting up those LED patio string lights you've been eyeing
- Monitoring and controlling your home's temperature wherever you are with a smart thermostat
- Upgrading windows to let the light in and keep the cold out

Keep our rebates in mind as you spring into the new season! Visit pse.com/rebates for everyday ways to save or shop instant rebates at pse.com/marketplace.

Blocked sewer? Call PSE, or ask your plumber to call

If you experience a sewer blockage outside the walls of your house, call PSE when your plumber is on their way to clear it. Or have your plumber call. Natural gas lines have inadvertently been installed through some sewer and septic lines. Clearing them with a cutting tool could break the gas line, allowing gas into your house and creating a dangerous situation. PSE will meet your plumber on-site—for free—to make sure the sewer or septic line is safe to clear.

pse.com/sewersafety



Service guarantees

We stand behind our service to you. We constantly track our performance and use your feedback to make improvements. We'll credit your bill if we fail to meet our service guarantees.

- Appointment service guarantee
- 24-consecutive-hour non-major storm power outage restoration guarantee
- 120-consecutive-hour power outage restoration guarantee

Conditions apply. More at pse.com/guarantees.

Help your neighbors in need

Consider donating to The Salvation Army Warm Home Fund, which provides short-term, emergency bill payment assistance to PSE customers facing financial difficulties. To give a little extra on your next PSE bill payment, specify the donation amount on your payment stub or when you pay online.

Protect yourself and your wallet—call 811 before you dig

Are you installing a fence post? Building a deck? Planting a tree? Call 811 before you start work on any of these projects to protect yourself from injury and to avoid having to pay costly repair bills. Underground gas and electric lines are often where you least expect them and even a tomato plant stake could puncture a gas line. Call 811 two business days (not counting the day you call) before you dig. Outline your dig area in white paint so that the utilities will know where to mark. Utility owned lines are marked for free. Learn more by visiting washington811.com.

