

2022 Distributed Energy Resources RFP:

Exhibit L. Resources

EXHIBIT L. RESOURCES

Resources

The purpose of Exhibit L is to give respondents to the DER RFP resources to help understand the context in which PSE is acquiring DERs by providing recent regulatory filings, and information on PSE's distribution system. This includes information on PSE's distribution system for the purposes of interconnection of DERs.

Regulatory Filings and Information

- PSE's 2021 Integrated Resource Plan ([link](#))
- PSE's 2021 All-Source Request for Proposals ([link](#))
- PSE's 2021 Clean Energy Implementation Plan ([link](#))
 - PSE's 2022-2023 Biennial Conservation Plan ([link](#))
- CETA Definition of Highly Impacted Community ([link](#))
 - Highly Impacted Communities Map and PSE Electric Service Territory:

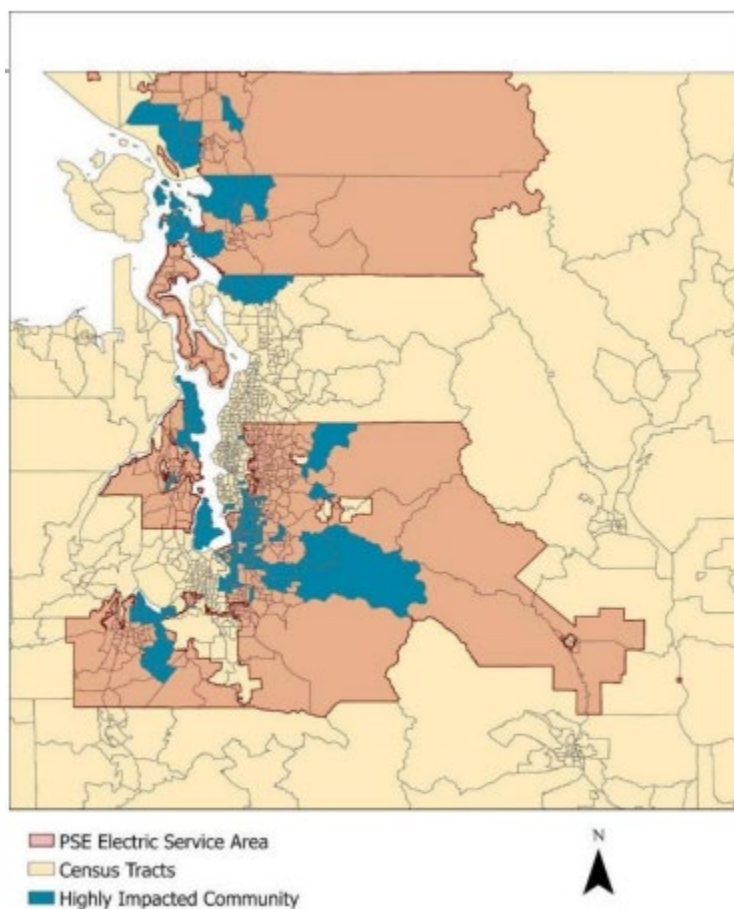
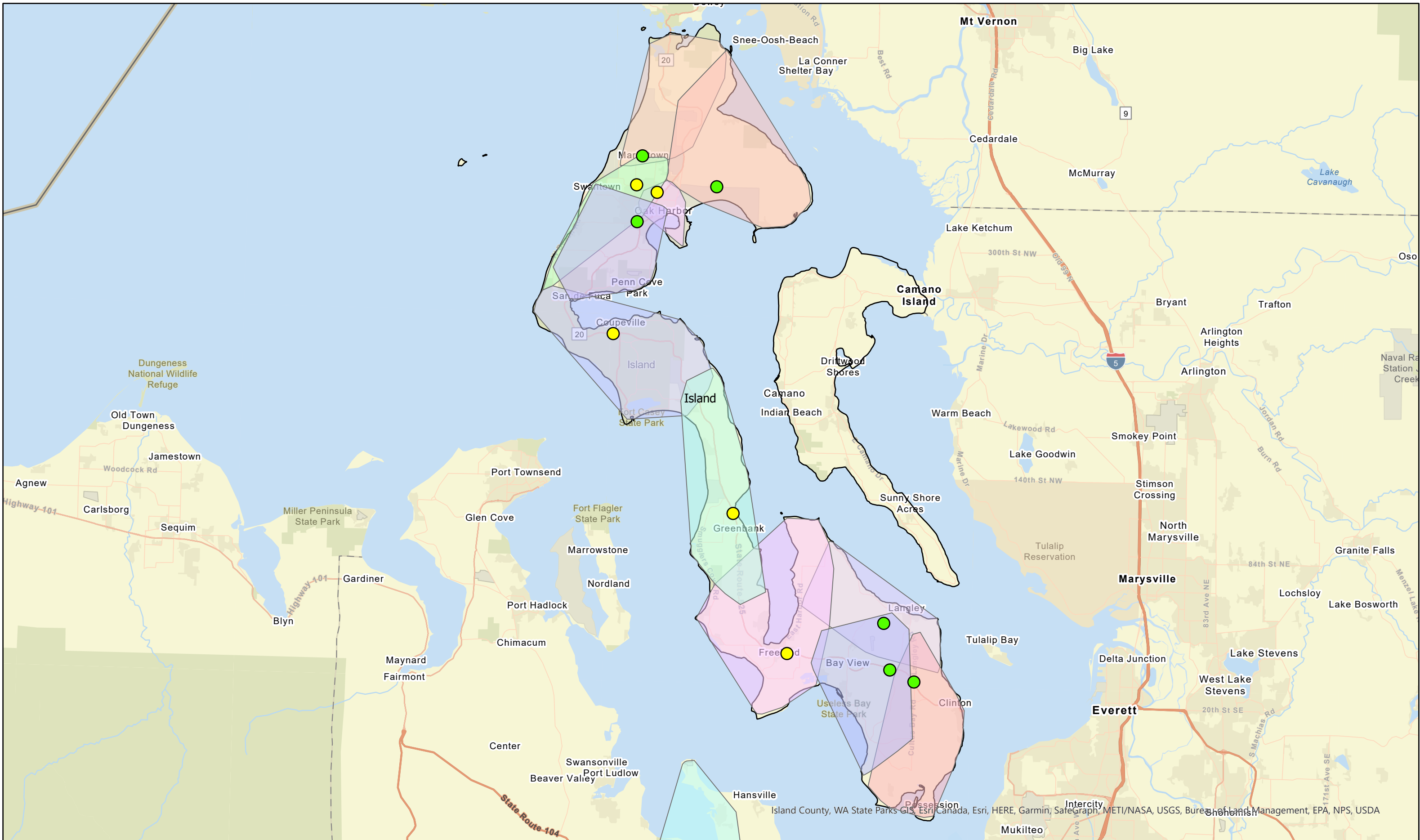


EXHIBIT L. RESOURCES

PSE Distribution System Information

- PSE expects the draft Hosting Capacity Map to be live by the end of November 2021 at this [link](#). PSE will post an update to the “Updates and Notifications” section under the 2022 DER RFP heading at www.pse.com/rfp when the Hosting Capacity Map is live and publicly available.
- Distribution Substation Load Maps by county on subsequent pages
 - Distribution Substation Load Maps show forecasted loading at PSE substations, thus indicating locations where DERs could potentially contribute to local distribution capacity relief.
 - Distribution Substation Load Maps are based on known existing system conditions and local load forecasts. Data is subject to change as updates are made to distribution system loading and configuration.



Island County Distribution Substation Load Map

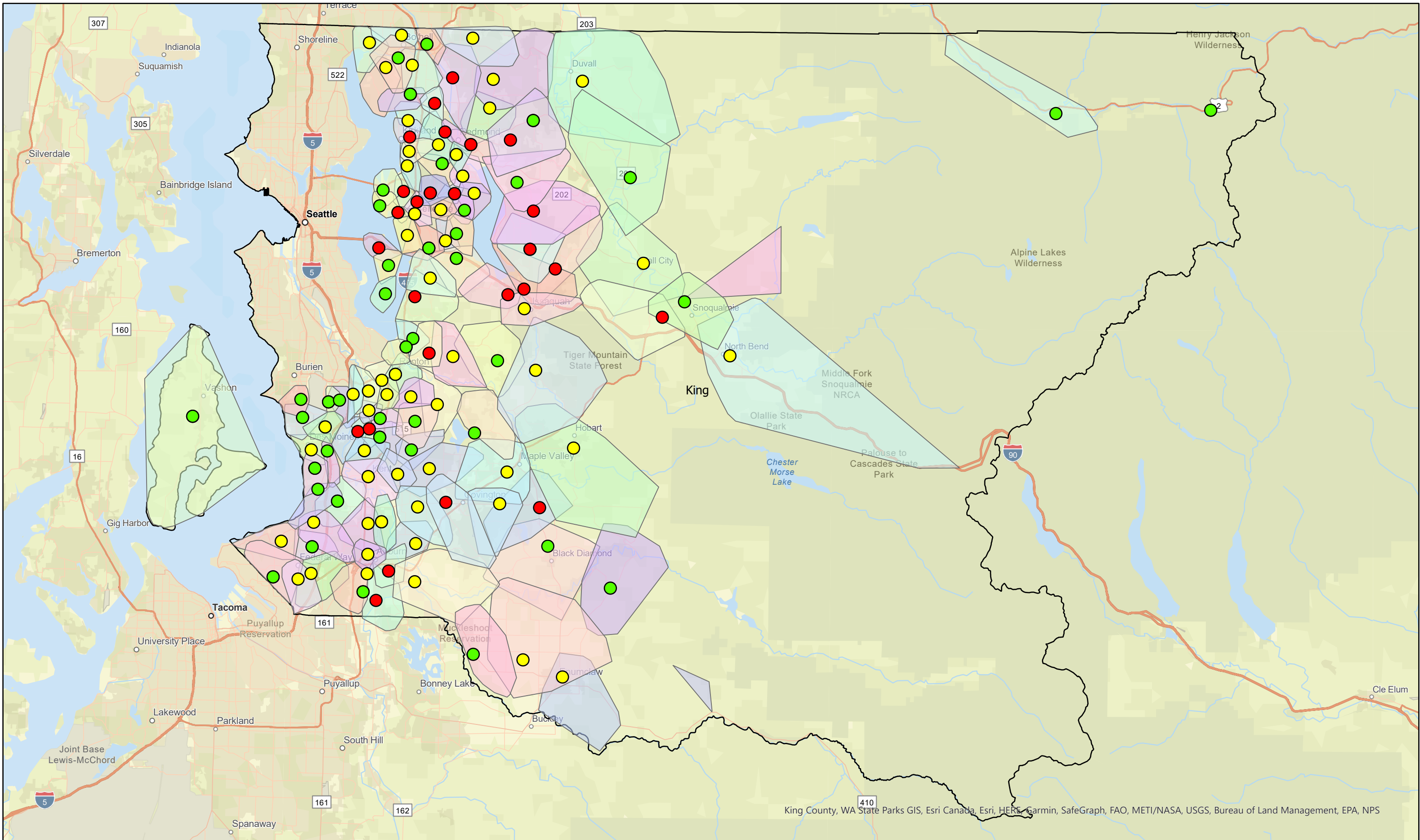
Legend

- Lightly Loaded
- Medium Loaded
- County
- Substation



The information on the attached map is subject to change without notice. Puget Sound Energy makes no representation or warranty of suitability of this information for any purpose. This map is not to be used for determining the actual location of any PSE facilities. This document may contain Critical Energy Infrastructure Information (CEII), the use or disclosure of which is restricted. Copyright ©2012. All rights reserved.

Property of Puget Sound Energy
 Maps, Records and Technology
 355 110th AVE NE, BELLEVUE, WA, 98004
 NAD_1983_StatePlane_Washington_North_FIPS_4601_Ft
 Date: 11/10/2021 1:242,000



King County, WA State Parks GIS, Esri Canada, Esri, HERE, Garmin, SafeGraph, FAO, METI/NASA, USGS, Bureau of Land Management, EPA, NPS



0 2.25 4.5 9 Miles

King County Distribution Substation Load Map

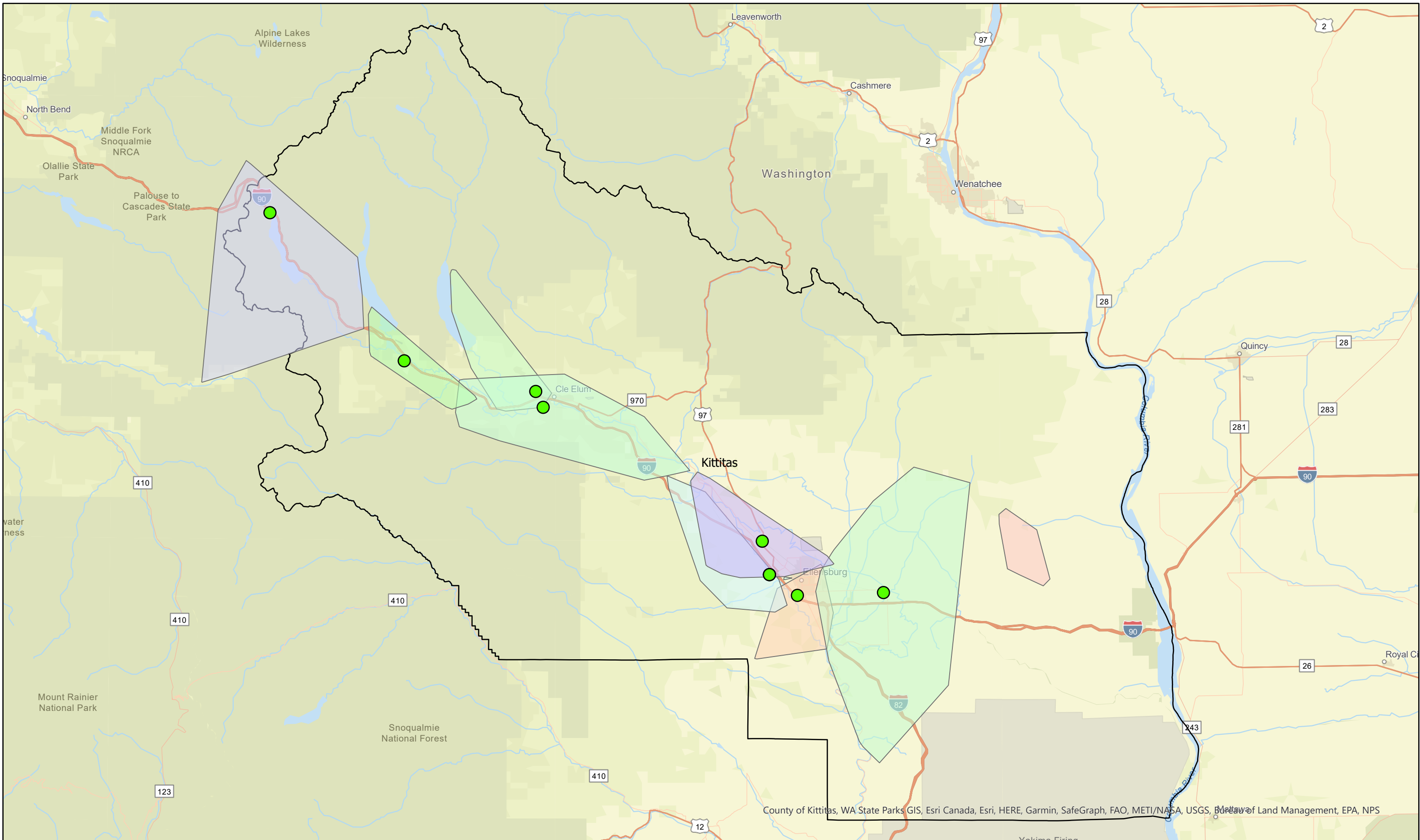
Legend

- Lightly Loaded
- Medium Loaded
- Heavily Loaded
- County
- Substation



The information on the attached map is subject to change without notice. Puget Sound Energy makes no representation or warranty of suitability of this information for any purpose. This map is not to be used for determining the actual location of any PSE facilities. This document may contain Critical Energy Infrastructure Information (CEII), the use or disclosure of which is restricted. Copyright ©2012. All rights reserved.

Property of Puget Sound Energy
 Maps, Records and Technology
 355 110th AVE NE, BELLEVUE, WA, 98004
 NAD_1983_StatePlane_Washington_North_FIPS_4601_Ft
 Date: 11/10/2021 1:333,000



County of Kittitas, WA State Parks GIS, Esri Canada, Esri, HERE, Garmin, SafeGraph, FAO, METI/NASA, USGS, Bureau of Land Management, EPA, NPS

PSE PUGET SOUND ENERGY

0 2.75 5.5 11 Miles

Kittitas County Distribution Substation Load Map

Legend

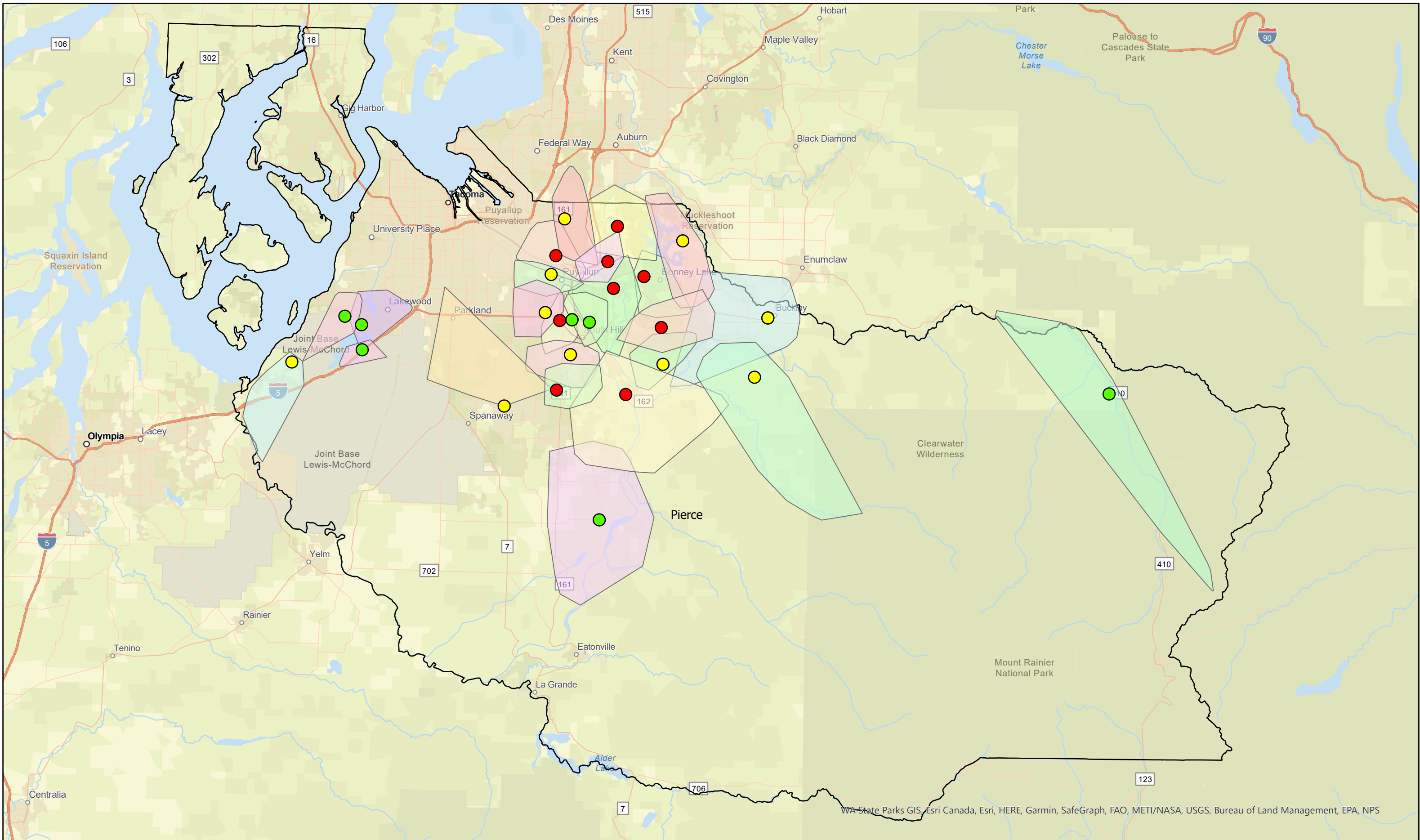
- Lightly Loaded
- County

Substation



The information on the attached map is subject to change without notice. Puget Sound Energy makes no representation or warranty of suitability of this information for any purpose. This map is not to be used for determining the actual location of any PSE facilities. This document may contain Critical Energy Infrastructure Information (CEII), the use or disclosure of which is restricted. Copyright ©2012. All rights reserved.

Property of Puget Sound Energy
 Maps, Records and Technology
 355 110th AVE NE, BELLEVUE, WA, 98004
 NAD_1983_StatePlane_Washington_North_FIPS_4601_Ft
 Date: 11/10/2021 1:408,000



Pierce County Distribution Substation Load Map

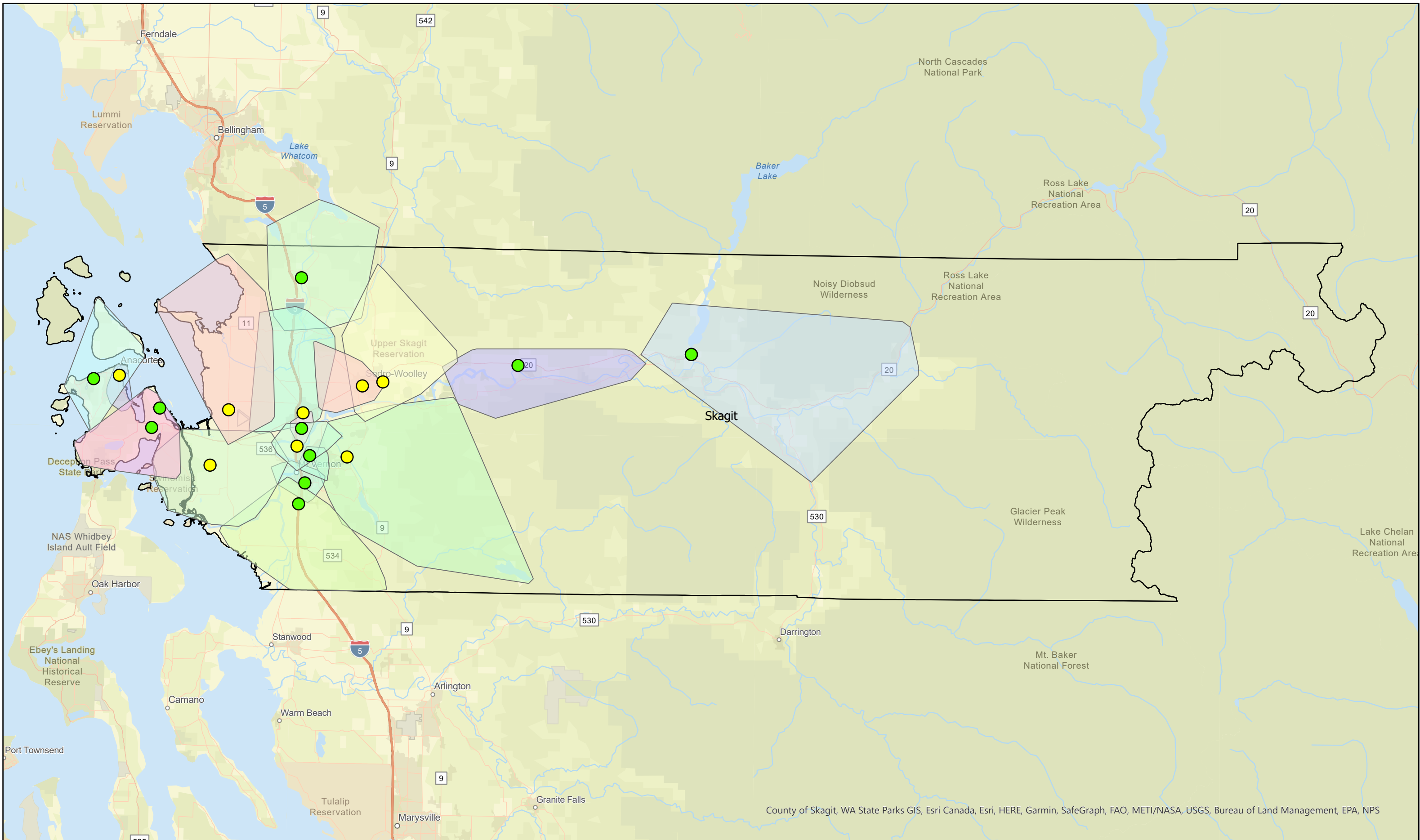
Legend

- Lightly Loaded
- Medium Loaded
- Heavily Loaded
- County
- Substation



The information on the attached map is subject to change without notice. Puget Sound Energy makes no representation or warranty of suitability of this information for any purpose. This map is not to be used for determining the actual location of any PSE facilities. This document may contain Critical Energy Infrastructure Information (CEII), the use or disclosure of which is restricted. Copyright ©2012. All rights reserved.

Property of Puget Sound Energy
 Maps, Records and Technology
 355 110th AVE NE, BELLEVUE, WA, 98004
 NAD_1983_StatePlane_Washington_North_FIPS_4601_Ft
 Date: 11/10/2021 1:326,000



County of Skagit, WA State Parks GIS, Esri Canada, Esri, HERE, Garmin, SafeGraph, FAO, METI/NASA, USGS, Bureau of Land Management, EPA, NPS

PSE PUGET SOUND ENERGY

0 2.5 5 10 Miles

Skagit County Distribution Substation Load Map

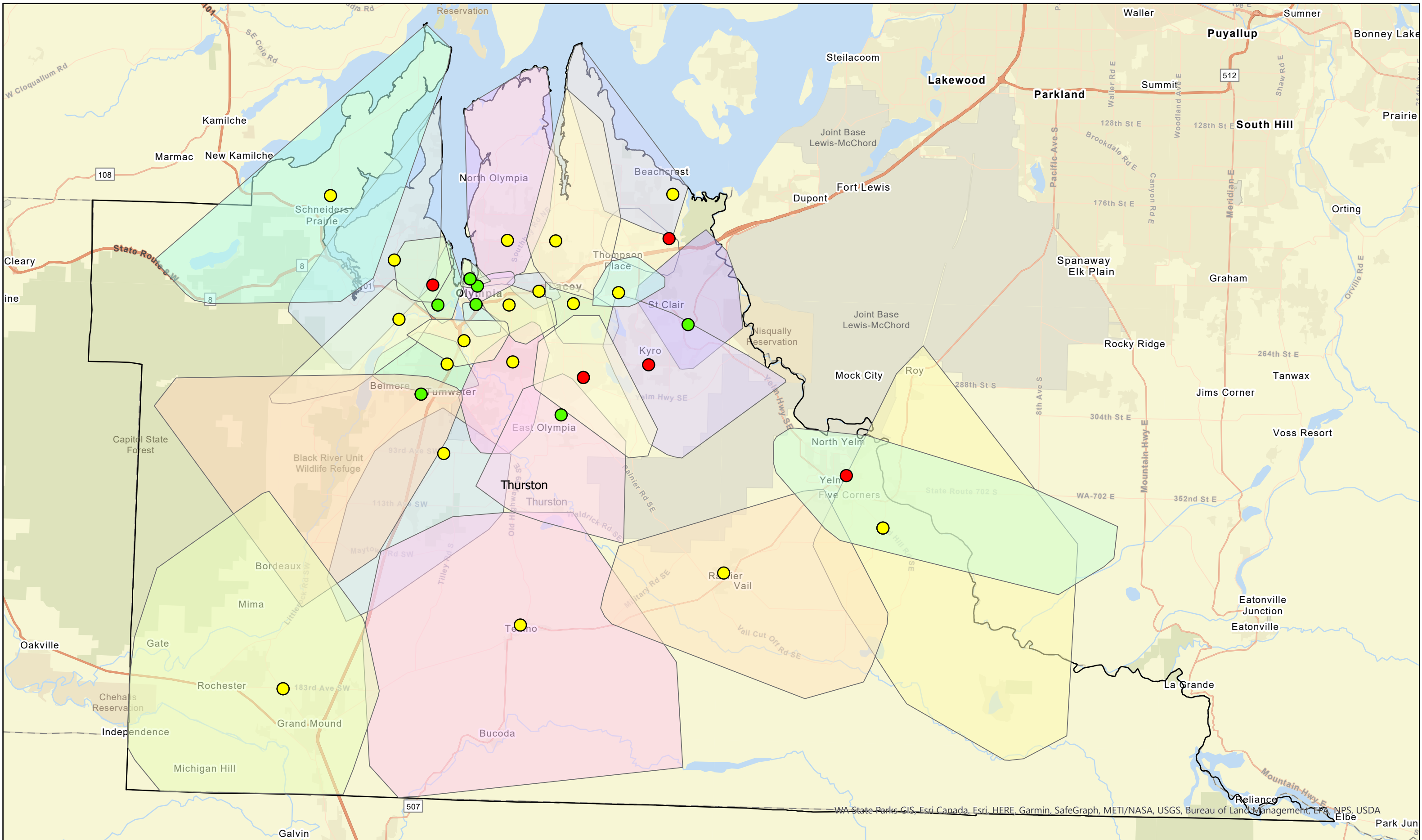
Legend

- Lightly Loaded
- Medium Loaded
- County
- Substation

N

The information on the attached map is subject to change without notice. Puget Sound Energy makes no representation or warranty of suitability of this information for any purpose. This map is not to be used for determining the actual location of any PSE facilities. This document may contain Critical Energy Infrastructure Information (CEII), the use or disclosure of which is restricted. Copyright ©2012. All rights reserved.

Property of Puget Sound Energy
 Maps, Records and Technology
 355 110th AVE NE, BELLEVUE, WA, 98004
 NAD_1983_StatePlane_Washington_North_FIPS_4601_Ft
 Date: 11/10/2021 1:382,000



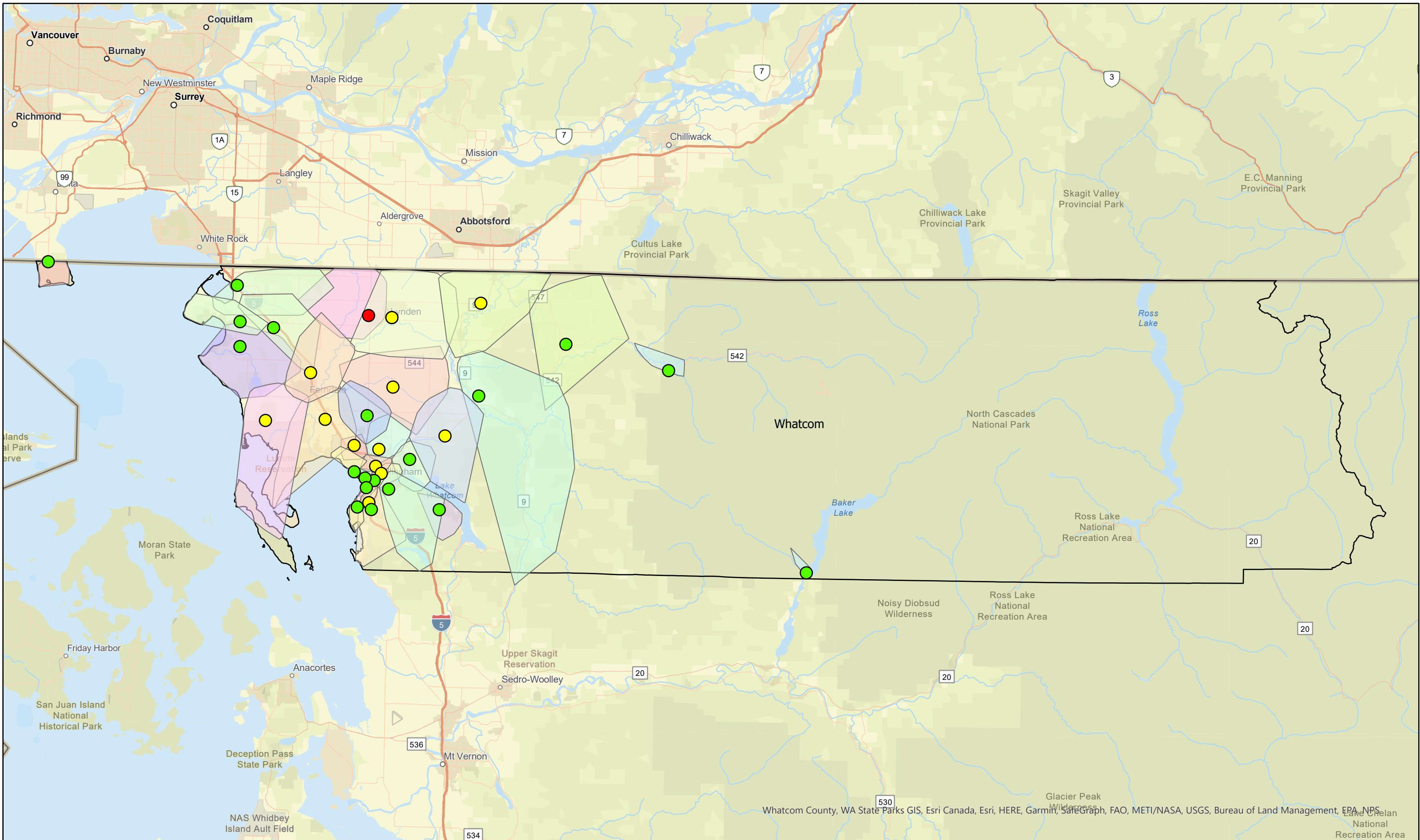
Thurston County Distribution Substation Load Map

Legend

- Lightly Loaded
- Medium Loaded
- Heavily Loaded
- County
- Substation

N
 The information on the attached map is subject to change without notice. Puget Sound Energy makes no representation or warranty of suitability of this information for any purpose. This map is not to be used for determining the actual location of any PSE facilities. This document may contain Critical Energy Infrastructure Information (CEII), the use or disclosure of which is restricted. Copyright ©2012. All rights reserved.

Property of Puget Sound Energy
 Maps, Records and Technology
 355 110th AVE NE, BELLEVUE, WA, 98004
 NAD_1983_StatePlane_Washington_North_FIPS_4601_Ft
 Date: 11/10/2021 1:206,000



Whatcom County Distribution Substation Load Map

Legend

- Lightly Loaded
- Medium Loaded
- Heavily Loaded
- County
- Substation



The information on the attached map is subject to change without notice. Puget Sound Energy makes no representation or warranty of suitability of this information for any purpose. This map is not to be used for determining the actual location of any PSE facilities. This document may contain Critical Energy Infrastructure Information (CEII), the use or disclosure of which is restricted. Copyright ©2012. All rights reserved.

Property of Puget Sound Energy
 Maps, Records and Technology
 355 110th AVE NE, BELLEVUE, WA, 98004
 NAD_1983_StatePlane_Washington_North_FIPS_4601_Ft
 Date: 11/10/2021 1:449,000