

## When Planting Trees

Avoid planting new trees directly beneath power lines or too close to electrical equipment. Choose smaller-scale native or ornamental landscape trees and shrubs, with a compact growth form.

## Know what's below

Before planting a new tree, be sure to Call Before You Dig to ensure your chosen site won't conflict with underground utilities. Just dial 811!



**PSE** PUGET SOUND ENERGY

Puget Sound Energy  
 P.O. Box 97034  
 Bellevue, WA 98009-9734  
[pse.com/treemaintenance](http://pse.com/treemaintenance)



# Vegetation Management



For your home



## The Evergreen State

Puget Sound Energy is proud to be the Washington state's largest investor-owned utility, serving electric power to eight counties in both Western and Eastern Washington. PSE has an obligation to provide reliable electrical service to our customers. Sometimes, the trees of the Evergreen State reduce our ability to deliver such reliable service.

The major cause of power outages are declining trees that fall into the electrical lines, wind blown branches that cross the line as they fall to the ground, and tree limbs that grow into power lines. PSE is responsible for the trimming or removal of incompatible trees near our power lines in order to comply with local, regional, and state laws for the safety of the public and to increase service reliability. Vegetation management involves a variety of programs and techniques designed to keep trees and limbs from coming in contact with power lines. Vegetation management's goal is to prevent tree-related power outages.

## What is Vegetation Management?

Selective removal of problem trees from beneath power lines or removal of hazardous trees that may fall into the electrical system is included in regular maintenance on all power line rights-of-way. Proper pruning and discriminating use of growth regulators and herbicides are also among the methods employed.

An ideal integrated vegetation management scenario is depicted below with only shorter, native plants growing under the lines.

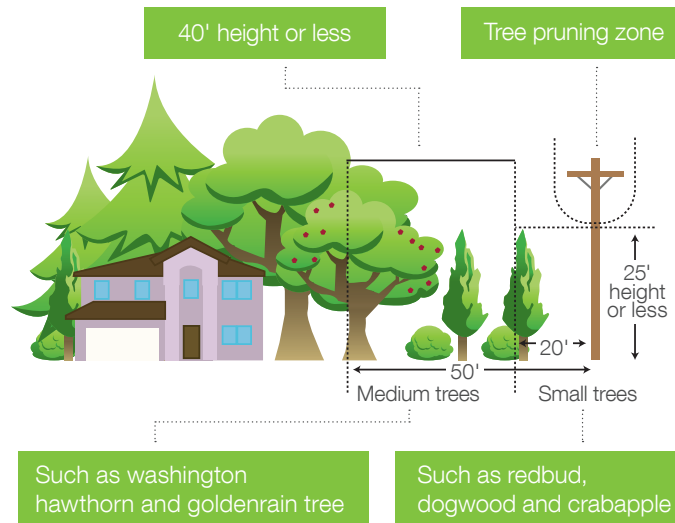


## Selective Tree Removal

We develop lower-growth-form plant communities composed of low-growing native ferns and shrubs and small-scale native and ornamental landscape trees. This results in a diverse plant community that is both aesthetically pleasing and of increased value to resident wildlife.

Emphasis is placed on removal of large, problem-tree species, particularly where trees have been weakened through repeated trimming. In some cases disease or insect infestation can result in irreversible decline. Weakening trees so they are more likely to cause problems during storms and high winds.

Tree removal is especially important where pruning alone cannot achieve safe clearance from power lines.

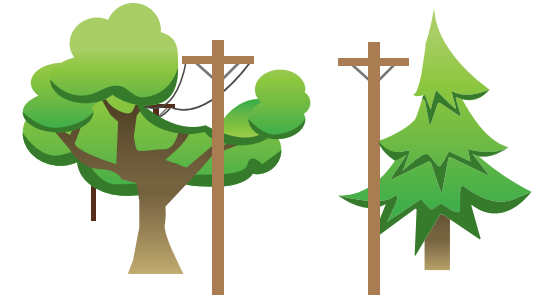


## Natural Pruning Methods

Where proper clearance can be achieved through trimming, natural pruning techniques, or directional trimming, will be used. Directional trimming concentrates on removing limbs and branches where the tree would normally shed them and direct future growth out and away from the electrical wires. While a newly pruned tree might look different to some, natural pruning is designed to protect the health of the tree. It minimizes re-growth and reduces trimming costs.

Directional trimming is the recommended method of the International Society of Arboriculture (ISA), American National Standards Institute (ANSI), and the National Arbor Day Foundation.

Both tree removal and natural pruning will be performed by specially trained contract crews working for Puget Sound Energy. All work will be done at no additional cost to you, the customer, and the crews will clean up the site when the work is completed. Any wood that is cut will be left on site in pieces of manageable size.



Example of directional pruning

Example of side pruning

## More Information

Puget Sound Energy has information available to provide customers with guidelines for sound tree selection, placement, and management so that trees planted today can contribute to the beauty of our Evergreen state for years to come.

For more information, contact Puget Sound Energy at **1-888-225-5773**

Arbor Day Foundation	<a href="http://arborday.org">arborday.org</a>
Trees Are Good	<a href="http://treesaregood.com">treesaregood.com</a>
Pacific Northwest Chapter of the International Society of Arboriculture	<a href="http://pnwisa.org">pnwisa.org</a>
Utility Arborist Association	<a href="http://utilityarborist.org">utilityarborist.org</a>



PSE has been recognized by the National Arbor Day Foundation as a utility that has demonstrated practices that protect and enhance America's urban forests since 2001.