



Sammamish-Juanita 115 kV Project

Advisory Group Meeting #4



January 26, 2012



Chapter 1: Routing information

Chapter 2: GeoRoute Model

- Update the model
- Run the model

Chapter 3: Next steps



PSE existing rights of way

North-South corridor

- Easements allow only **two** electric systems
- Corridor currently has a 230 kV line and a 115 kV line
- PSE can rebuild the existing lines or increase the voltage, but cannot add a third line in the existing easements



PSE existing rights of way



North-South corridor

- To add a third line, PSE would need to acquire at minimum an **additional 50 feet** width of new adjacent easements on private property
- Challenges: homes, businesses, critical areas, and Olympic Pipeline

PSE existing rights of way

Sammamish Substation East-West corridor

- PSE owns the property, so no easement restrictions
- Some engineering challenges, but there is room for a new line





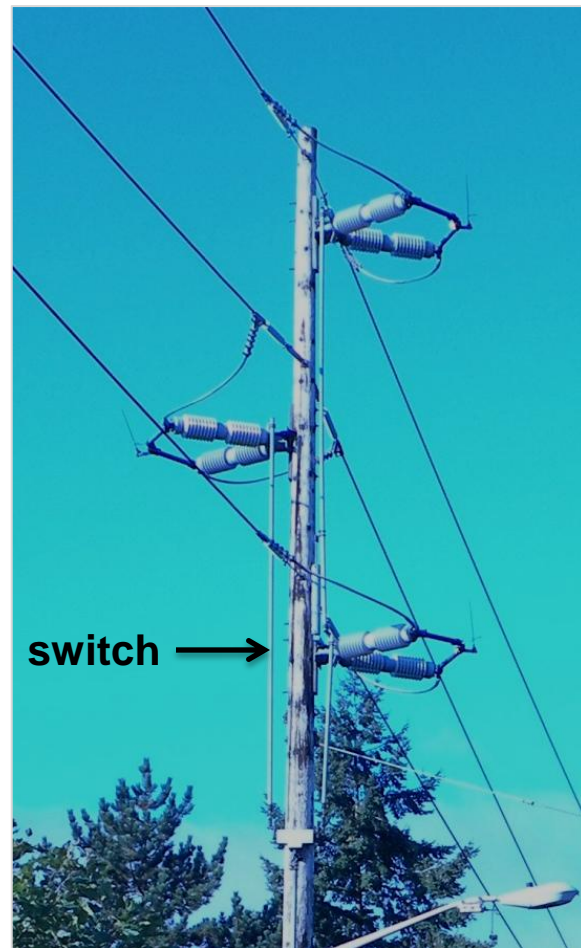
Exiting the Sammamish Substation

- It is feasible for the new line to exit the Sammamish Substation along:
 - The eastern edge near Willows Road
 - The western edge through the existing right of way to 132nd Ave NE
- Both exit sample model outputs were shown at the open house



Juanita-area endpoints

- The new line could end at:
 - Juanita Substation (NE 132th Street)
 - NE 124th Street
 - NE 128th Street
- To connect the new line south of the Juanita Substation, PSE would:
 - Install new switches on new or existing transmission poles
 - Not require a new substation
 - Rebuild the line between the switch and the Juanita Substation



Pole with switch



Juanita-area endpoints

- Considerations for a different endpoint:
 - Could produce different route options
 - Could affect more residential areas



Chapter 1: Routing information

Chapter 2: GeoRoute Model

- **Update the model**
- **Run the model**

Chapter 3: Next steps



Tonight's goals

- Consider public feedback and determine if criteria or weighting changes are needed
- Run the model
 - Review exiting the Sammamish Substation from different locations
 - Review different Juanita-area endpoint model runs
 - Begin identifying potential route alternatives



Chapter 1: Response to information requests

Chapter 2: GeoRoute Model

- Update the model
- Run the model

Chapter 3: Next steps



February advisory group meetings

- Feb. 2
 - 5:30 p.m. to 8:00 p.m. at the Baymont Inn and Suites in Kirkland
 - We will identify potential route alternatives and narrow them down for further review

- Feb. 16 - To be determined whether this meeting is needed



Public comment from audience



Questions?

- **Sammamish-Juanita Project Contacts:**

Barry Lombard

Project Manager

barry.lombard@pse.com

425-456-2230

Jason Van Nort

Government and Community Relations Manager

jason.vannort@pse.com

425-462-3820



Thank You!