



July 2009

Puget Sound Energy to upgrade electrical system in Lacey

What is the project?

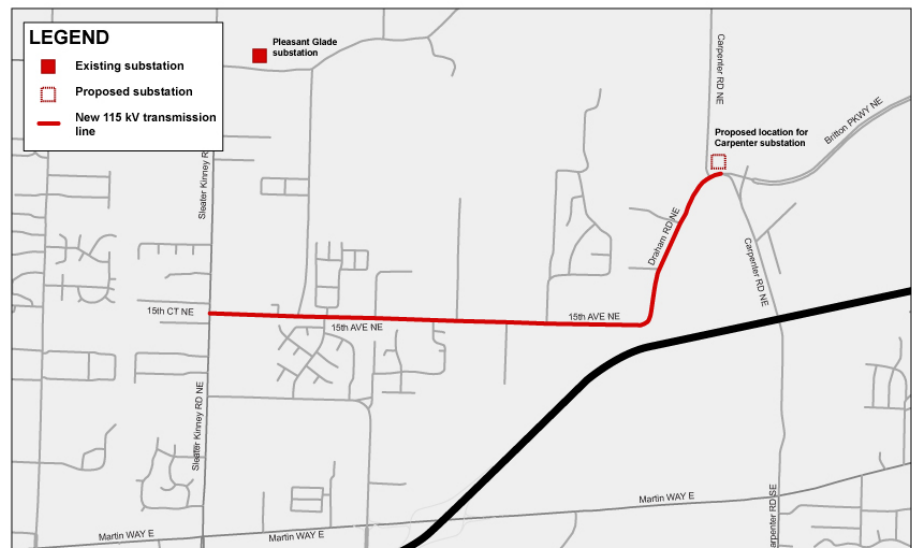
Puget Sound Energy plans to build Carpenter substation, a new electric distribution substation, at 6140 Britton Lane NE and overbuild a 115 kilovolt (kV) transmission line along two miles of existing distribution lines on Draham Road Northeast and 15th Avenue Northeast in Lacey.

Why is PSE building the substation?

PSE's new Carpenter substation and associated transmission line will help meet increasing demand in northeastern Thurston County, including Lacey, Olympia and their urban growth areas, and increase the overall reliability of the electric system.

How will this benefit you and your community?

Our new substation and transmission line will increase electric capacity and reliability to customers in northeastern Thurston County now and in the future. When complete, our substation will include one 25 mega volt ampere (MVA) transformer and have the space to add a second 25 MVA transformer, allowing PSE to double the capacity in the future without changing the substation footprint.



What will the work entail?

- Site work (clearing and grading) to prepare for substation construction
- Installing concrete foundations, transformers and associated electrical equipment
- Installing underground and overhead distribution feeder lines
- Overbuilding new 115 kV lines along existing distribution lines on Draham Road Northeast and 15th Avenue Northeast
- Site restoration, including landscaping and fence installation

Project schedule

- Property selection and purchase: 2008
- Engineering: fall 2008 – summer 2009
- Permitting: summer 2009 – spring 2010
- Construction: spring 2010 – fall 2010

Construction will be confined to normal daytime working hours Monday through Friday, with the possibility of some work on Saturdays. When working in or along roads, signs and flaggers will help direct traffic.

What can I expect to see or hear during construction?

Typical construction equipment will be used including track hoes, bull dozers, trucks and cranes. Construction will involve vegetation removal and site grading, as necessary, to accommodate the new substation. Concrete foundations will be installed, followed by electrical equipment, enclosures and fencing.

This project will also involve replacing existing wood poles along the north sides of Draham Road Northeast and 15th Avenue Northeast with new taller wood poles and new 115 kV transmission lines. The area around the substation and along the transmission corridor will be landscaped for screening and site enhancement.

Why are substations necessary?

Substations are critical links in the electricity distribution system, containing utility circuit protection, voltage regulation, and equipment that steps down higher voltage to lower voltage. Before reaching homes and businesses, power is routed through our transmission system to a substation where it is changed to a lower voltage that can be utilized by customers.

Why are transmission lines necessary?

Transmission lines are key links in the electrical distribution process. The lines safely transport high voltage electricity from power sources, including hydroelectric dams and wind facilities, to substations in local communities. Transmission normally takes place at voltages of 55 kV and higher.

Transmission lines supply high-voltage power to substations where the power is then stepped down using transformers to lower voltage levels required by residential and business customers.

PSE's commitment

PSE remains focused on our vital mission to provide essential energy to our customers. At the same time, the company works hard to keep people informed of scheduled activities in their communities, and to ask for suggestions and opinions as those activities are being planned.

For additional information/questions please contact:

Pete Cossette
Project Manager
Puget Sound Energy
425-462-3945
peter.cossette@pse.com