



November 2008

Puget Sound Energy to improve electric system reliability and capacity in downtown Bellingham

What is the project?

To meet federal requirements as well as current and future energy needs in Bellingham, Puget Sound Energy plans to convert the existing 4 kilovolt electric distribution system to a 12.5 kV electric distribution system in three areas of downtown Bellingham:

1. Between Cornwall Avenue and Railroad Avenue from York Street to East Maple Street
2. Railroad Avenue and North State Street from East Champion Street to Laurel Street
3. North State Street and North Forest Street from the Qwest Building to the downtown Bellingham Park and Ride.

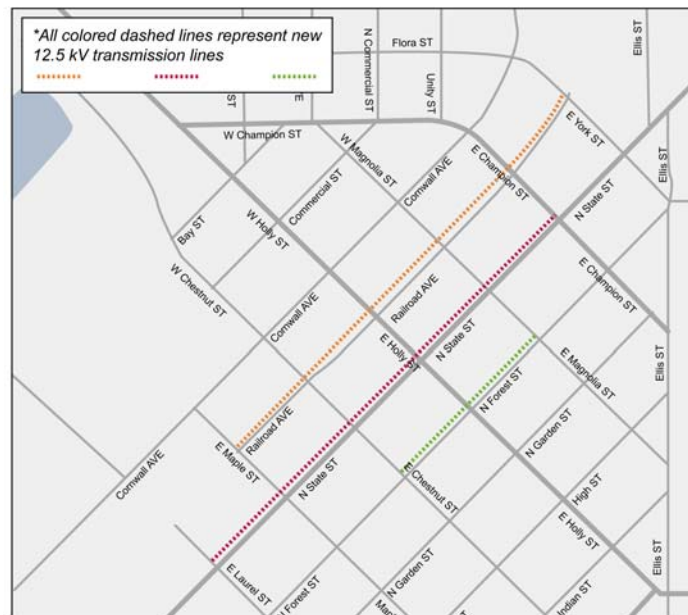
PSE is partnering with the City of Bellingham on these electric system upgrades. The city has offered to provide the trench necessary to install the system, including the necessary backfill and restoration. Additionally, the city will provide trench, backfill and restoration in the balance of the areas where PSE had originally planned to rebuild an overhead distribution system, enabling PSE to install the entire new distribution system underground.

Why is PSE rebuilding the distribution system?

PSE is rebuilding the distribution system to meet new federal electrical standards and to increase the capacity, safety and reliability of the electrical system in downtown Bellingham. The new electrical standards are required by the Federal Energy Regulatory Commission.

How will this benefit you and your community?

Our new distribution lines will increase electric capacity and reliability to customers in downtown Bellingham, as well as help reduce power outages now and in the future.



Bellingham Alley Conversion Project

4464_001

Project Schedule

- Design and permitting: winter 2008
- Construction: spring 2009
- Completion: summer 2009

What will the work entail?

- Installing new distribution lines underground
- Trenching and backfilling
- Site restoration

Construction will be confined to normal daytime working hours Monday through Friday, with the possibility of some work on Saturdays.

What can I expect to see or hear during construction?

Typical construction equipment will be used, including back hoes, cranes, bucket trucks, and work trucks.

Why are distribution lines necessary?

A distribution line is an overhead or underground medium-voltage (12.5 kV) line that carries power from the substation to our customers. One-half of PSE's distribution lines are underground. Distribution current is stepped down, or reduced, to household voltage through smaller customer transformers.

PSE's commitment

PSE remains focused on our vital mission to provide essential energy to our customers. At the same time, the company works hard to keep customers informed of scheduled activities in their communities, and to ask for suggestions and opinions as those activities are being planned.

For additional information/questions please contact:

Heather Brickey
Project Manager
Puget Sound Energy
425-462-2848

heather.brickey@pse.com