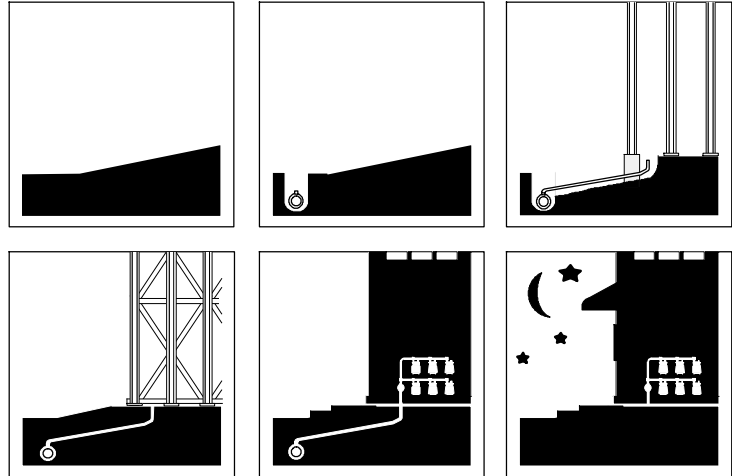

March 2012



GAS SERVICE HANDBOOK

Commercial/Industrial &
Multifamily Developments

© 2012 by Puget Sound Energy

All rights reserved. No part of this book may be reproduced or transmitted in any form or by any means, electronic or mechanical, including photocopying, recording, or information storage and retrieval system, without permission from Puget Sound Energy (PSE).

Guarantees

Customer service - guaranteed

PSE makes two service guarantees to you. First, we commit to keeping scheduled appointments, and second, we commit to restoring power outages as soon as we can.

- ✓ If we don't keep an appointment to install new service, reconnect existing service, or inspect natural gas equipment, you'll receive a \$50 credit on your PSE bill.
- ✓ If your electric service is out for 120 consecutive hours or longer, you may be eligible to receive a \$50 credit on your PSE bill.

These service guarantees are in addition to nine service quality measures that track PSE's performance, and are subject to certain conditions and may be suspended during unusual and exceptional circumstances. For more information, visit [PSE.com/Guarantees](https://www.pse.com/Guarantees).

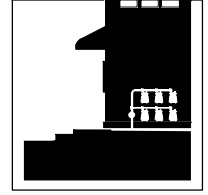


Table of Contents

Preface

Natural gas—the smart choice.	v
What this handbook contains	v
Scheduling	v
Codes and jurisdictions	v
How to contact Puget Sound Energy	vi
PSE’s Service Providers	vi
Overview: Bringing Natural Gas to Your Building Site	vii

Chapter 1: Steps to a Smooth Installation

The basics: understanding the installation	1
Getting started with the installation process	1
Is there a gas main located near your site?	1
Requirements for frontage road improvements	2
What natural gas equipment will be installed in your new facility?	2
Customer fuel line	2
Customer Responsibilities: underground fuel line piping	2
Factors that can delay installation	3
Job site safety requirements	3
Locating other utilities	4

Chapter 2: Codes and Property Issues

Relevant inspections and local codes	5
Easements and public right-of-way issues	5

Chapter 3: Requesting Natural Gas and Installation Requirements

Ordering gas service	7
Bringing the natural gas main to a new commercial, industrial, or multifamily facility	7
Step 1: Application process	7
Step 2: Design process	7
Step 3: Construction scheduling process	7
Customer-provided trenching	8
Gas service line trench excavation requirements	8
Customer-installed gas service conduit	9
Gas service conduit installation requirements	9

Chapter 4: Meter Installation

Selecting a gas meter location 13
 Required location 13
 Acceptable meter locations 13
Minimum meter clearance requirements 14
Marking fuel lines 14
Improper electrical grounding 14
Meter set assembly selection 15
Meter installation 17
Meter turn on 18

Chapter 5: Pressure Gas

What is “pressure gas”? 21
Requirements for pressure delivery 21
Upgrading facilities to accommodate pressure delivery 21

Chapter 6: Programs Offered by Puget Sound Energy

Energy Efficiency Programs 23
Contractor Referral Service™ 23
Gas heating system inspection for your furnace 23

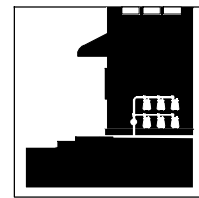
Glossary 25

List of Figures

Figure 1	Example of typical gas system components	1
Figure 2	Typical commercial/industrial/multifamily joint utility trench with customer-installed gas service conduit	11
Figure 3	Yellow Unit Number Tag (Form 3095)	14
Figure 4	Typical commercial/industrial diaphragm-type gas meter set assemblies	15
Figure 5	Typical commercial/industrial rotary-type gas meter set assemblies	16
Figure 6	Components of a typical 250 manifold meter set assembly for a commercial structure with multiple tenants or multifamily	16
Figure 7	Orange WARNING tag	17
Figure 8	New 250 meter set assembly installation	17
Figure 9	New 425 through 1000 gas meter set assembly	18
Figure 10	Typical 250 gas meter set assembly for small loads	19
Figure 11	Typical 425 through 1000 gas meter set assembly	19

Back Pocket

Gas Meter Location Sticker	Form 1461
Joint Utility Mainline Trench Excavation Requirements	Form 2809
Gas and Electric Underground Service Installation Requirements	Form 3061
Gas Meter Clearances and Service Installation Requirements	Form 3885



Preface

Natural gas—the smart choice

Every year, thousands of consumers call us about switching to natural gas because using natural gas is safe, clean, and efficient. Consider the following benefits:

- **Reliable.** Even during major power outages, gas ranges, water heaters, and some fireplaces are still functional.
- **Safe.** Natural gas is nontoxic, odorless, and colorless in its natural state. *Mercaptan*, a harmless odorant, is added to create a clearly detectable scent.
- **Clean burning, energy efficient and abundant.** Natural gas is an ideal choice if you care about the environment.

What this handbook contains

This handbook contains common information on nonresidential service which includes:

- Commercial and industrial buildings
- Apartment complexes
- Multifamily structures
- Glossary of terms used in this handbook

NOTE: For your convenience, glossary words appear in bold italics throughout the text the first time they appear (e.g., *meter*).

Scheduling

The time needed for engineering, scheduling, and construction of the work will vary depending upon the complexity of the job and the volume of work requested by PSE customers. Contact your Customer Construction Services (CCS) representative at **1-888-321-7779** for current construction scheduling.

Codes and jurisdictions

Please remember that when it comes to installing new natural gas equipment and appliances, it is your responsibility to secure all necessary permits and ensure your project complies with all applicable state, county, and local laws and/or ordinances relating to the equipment. Your heating contractor usually obtains permits and facilitates approvals for you, but it is good to confirm this with your contractor.

How to contact Puget Sound Energy

You can obtain further information by contacting us through the following:

- **PSE Energy Advisors at 1-800-562-1482**
Monday thru Friday, 8 a.m. - 5 p.m.
- **PSE Customer Construction Services (CCS) at 1-888-321-7779**
Monday thru Friday, 7 a.m. - 5 p.m.

If you have an emergency, service delivery, or general billing question regarding your account, please call:

- **Customer Service at 1-888-225-5773**
24 hours a day, 7 days a week.

PSE's Service Providers

PSE contracts with two partner companies to provide construction and engineering services: Potelco, Inc. and InfraSource Construction LLC. The project manager and the employees who install your service may work for these service providers on PSE's behalf.

Overview: Bringing Natural Gas to Your Building Site

This checklist notes the steps to bring natural gas to your construction site. The information in this handbook applies to PSE customers who require new *nonresidential* natural gas service. If additional information is needed, contact a local PSE Customer Construction Services representative at:

CUSTOMER CONSTRUCTION SERVICES
1-888-321-7779

Commercial/Industrial & Multifamily Customer Responsibilities:

- Call Customer Construction Services (CCS) to determine if a natural gas main is located near your building site.
- Obtain proposals from contractors and decide what kind of natural gas appliances and equipment you will purchase and at what cost. Remember, it is your responsibility to provide the required fuel line from the natural gas meter to your new equipment.
 - PSE offers different delivery pressure options that depend upon equipment pressure requirements, which may result in special meter set and customer installation requirements (your contractor can help you with this).
- A PSE representative will contact you to confirm project details, such as service length, customer provided conduit, etc.
- Complete and return the appropriate *Gas Service Application(s)* (provided by a PSE representative or available at PSE.com).
- Provide CCS with an approved complete set of civil site plans (if new construction) and the legal description or tax parcel identification. Include plans for any frontage road improvements.
- Inform CCS whether you will use customer-provided or utility-provided main line trench or conduit for the service lines.
- Ensure that existing underground utilities are located before you dig.
- After your fuel line has been inspected and approved and your new natural gas equipment is installed, please coordinate with your project manager so that PSE may unlock the gas service valve, turn on the meter, and start your appliances. *Only authorized PSE personnel can remove the gas service lock and operate the valve.*

Puget Sound Energy's Responsibilities:

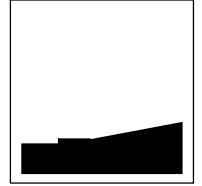
- Determine and inform you of gas availability.
- Perform an economic feasibility study and determine costs, if applicable.
- Notify you of:
 - Right-of-way or easement requirements.
 - Additional permit requirements related to natural gas service/main line construction (fisheries, etc.), if necessary.
- Install the natural gas main, service, and meter set assembly.
- Turn on natural gas meter(s).

Scheduling:

- Scheduling will be based on a mutually agreed-upon time frame that is consistent with your needs, permit requirements, and design criteria.

Chapter 1

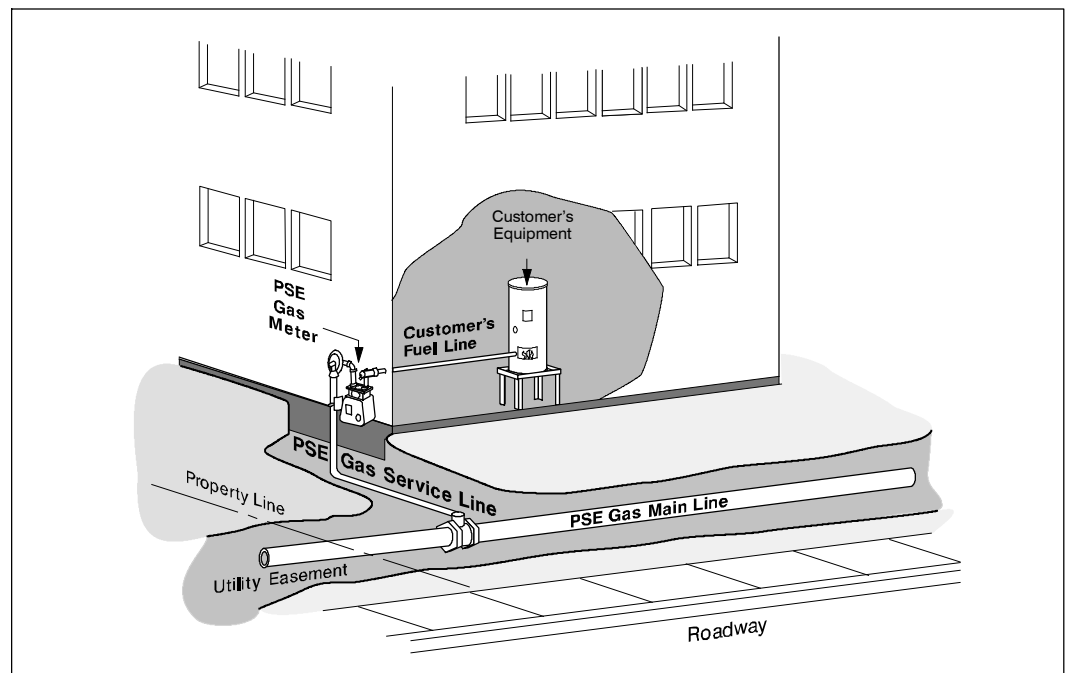
Steps to a Smooth Installation



The basics: understanding the installation

Before Puget Sound Energy installs your *natural gas* facilities, it is important to understand the overall components of an installation. *You are responsible* for your natural gas *fuel line* and appliance hookup. *Puget Sound Energy is responsible* for the installation of the natural gas *main, service, and meter* (see Figure 1).

Figure 1 Example of typical gas system components



Getting started with the installation process

Before the installation process can begin, you need to know the following:

Is there a gas main located near your site?

To determine if a natural gas main is located near your building site, call Customer Construction Services (CCS) at **1-888-321-7779**.

If there is no gas main located near your building site, PSE will need to review and estimate the feasibility of extending gas facilities to you. If PSE determines that extending a gas main to you is needed, main extension charges may apply.

Requirements for frontage road improvements

If the permitting authority requires frontage improvements in conjunction with your development, plans and profiles for these improvements shall be included with the application for service. Costs associated with relocation of any PSE facilities, in conjunction with frontage improvements, shall be borne by the developer. Some examples of improvements that could impact PSE facilities are road widening, curb/gutter, storm drainage, water, sewer, guardrail, retaining/sound walls, culverts, driveways, etc.

Please discuss the need for municipally required frontage road improvements with the PSE project manager.

What natural gas equipment will be installed in your new facility?

Please inform PSE of your estimated natural gas *load* and pressure requirements. Evaluate your total natural gas load by adding up the *Btu* inputs for all equipment being installed (immediate and future use) and tell us the desired pressure delivery at the point of connection to the meter.

Remember, besides space and water heating, natural gas can be used for clothes drying, cooking, pool and spa heating, barbecues, fireplaces, patio heaters, and generators. Some pieces of equipment (such as on-demand (tankless) water heaters, natural-gas-fueled standby generators, boilers, and process equipment) require higher gas delivery pressure or increased gas load. If you are installing this sort of equipment, inform PSE so your meter and service piping can be installed properly. Be sure to consider all the options.

Customer fuel line

The *fuel line* is the gas piping (*owned and maintained by the customer*) from the meter to the customer's equipment/appliances.

NOTE: The International Fuel Gas code (as adopted by the State of Washington) regulates the design and installation of fuel lines and appliances. It is your responsibility to ensure that a mechanical permit or a gas piping permit is obtained from the appropriate jurisdiction and an inspection of the completed installation is performed and the job is *approved*.

Customer Responsibilities: underground fuel line piping

Fuel gas piping between your gas meter and your natural gas appliances or equipment belongs to you. If any of this piping runs underground, it needs to be maintained. Underground fuel line might be installed to serve a hot tub, pool, shop, other building, or a natural gas fueled standby generator.

NOTE: *It is your responsibility to maintain underground fuel line piping.*

If your buried piping is not maintained, it may leak or corrode. Be sure to periodically inspect buried pipes for leaks, and if the piping is metallic, inspect for corrosion. Make sure repairs are done immediately to correct any unsafe condition. A corrosion control company or a plumbing or heating contractor can help inspect it and repair it.

If you plan to excavate near your buried piping, it should be located in advance and the excavation should be done by hand. Before any digging project, contact the 811 "Call Before You Dig" hotline two business days before digging. The "Call Before You Dig" law requires anyone digging into the ground to call and have underground utilities located to avoid potential hazards with striking or digging up utility lines.

If you smell the rotten egg smell of odorized natural gas, call PSE 24 hours a day at 1-888-225-5773 and we will check it for you. For emergencies, call 911.

CAUTION: *When excavating near buried gas piping, locate the piping first, then excavate by hand.*

Factors that can delay installation

No one wants to have their project delayed. We have identified the following circumstances as common impediments to installing service lines:

- Debris in the work area or along the route of the proposed service extension.
- **Trenches** and conduit are at improper depth.
- Building is not framed and sided at the meter location for the meter set assembly installation.
- Requested meter location is not usable or fails to meet minimum clearances (see Chapter 4, “Selecting a gas meter location”).
- Service length and load is incorrectly reported.
- **Conduit** used is incorrect size, type, or installed improperly.
- The foundation is not sufficiently **backfilled** to support the meter or service piping.
- Alterations that must be made to meet local codes are not completed.
- Fuel line installed without an approved permit and/or not pressure tested.
- Concrete pad required for industrial metering either not provided or installed incorrectly.

Puget Sound Energy will post a notice at the building site explaining why we could not install the service. It will be your responsibility to call us and reschedule the installation.

Job site safety requirements

In case of emergency involving a service line or main break, call Customer Service at 1-888-225-5773.

Puget Sound Energy asks that customers follow these safety requirements:

- Buildings must be framed and sided at the meter location before we can set a gas meter. Puget Sound Energy will not install meter set assemblies against foundations only.
- A meter may be installed, but gas will not be turned on until your fuel line has been pressure tested and an approved permit has been obtained from, and signed off by, the local administrative authority.
- Our crew will ask you to extinguish any smoking material or open flame that presents a danger to the operation prior to a line purge.
- Noise from compressor and gas purging operations can exceed 90 dBA. Hearing protection is recommended when these operations are being performed.

Locating other utilities

Before any digging project, contact the 811 “Call Before You Dig” hotline two business days before digging. The “Call Before You Dig” law requires anyone digging into the ground to call and have underground utilities located to avoid potential hazards with striking or digging up utility lines.

The utility locate service is free and necessary. The utility locate service will locate the underground facilities owned by the member utilities in your area. The locate service uses the following color codes to identify underground utilities:

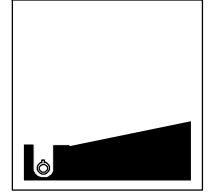
Color	Utility
White	Proposed excavation
Pink	Temporary survey markings
Red	Electric power lines, cables, conduit, and lighting cables
Yellow	Gas, oil, steam, petroleum, or gaseous materials
Orange	Communication, alarm or signal lines, cables, or conduit
Blue	Potable water
Purple	Reclaimed water, irrigation, and slurry lines
Green	Sewers and drain lines

NOTE: Use white paint to mark the area within which you want utility locations.

Once all utilities are located:

- Do not dig with machinery closer than 24 inches from the locate marks.
- Hand dig to expose all utilities to be crossed.

Chapter 2



Codes and Property Issues

Relevant inspections and local codes

This handbook provides most of the information and requirements needed to bring natural gas to your building site. However, it does not include all possible standards and specifications required by Puget Sound Energy, state, federal, or local code. If you need additional information, contact your Customer Construction Services (CCS) representative, your local government agency, or state authority.

This handbook shall not be interpreted to conflict with the regulations of the State of Washington or other regulatory bodies having jurisdiction. Puget Sound Energy's requirements may be more stringent. Local codes and requirements related to the planned work should be addressed before any construction begins.

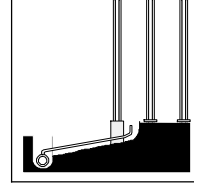
Easements and public right-of-way issues

As part of the installation process, Puget Sound Energy will:

- Apply for any necessary *easements* prior to installation, using the customer's information.
- Apply for necessary permits for the portion of the work done in the public *right-of-way*.
- Request underground *utility* locations in the public right-of-way.
- Dig *trench* on the public right-of-way.
- *Backfill* and be responsible for that portion of the trench on the public right-of-way.
- If PSE is digging the trench on private property, PSE will provide and install the bedding material to protect the pipe.

Chapter 3

Requesting Natural Gas and Installation Requirements



Ordering gas service

To order individual service lines, call our Customer Construction Services (CCS) representative at **1-888-321-7779** to discuss the project details. They will provide the proper application(s) or direct you to PSE.com. You'll want to have the following information handy:

- Service address, including suite number.
- Desired meter location.
- Natural gas delivery pressure required at meter connection point.
- Project coordinator and project ownership contact information.

Bringing the natural gas main to a new commercial, industrial, or multifamily facility

The following three steps describe what PSE requires to extend a new natural gas main to a commercial, industrial or multifamily facility:

Step 1: Application process

Complete and return the appropriate *Gas Service Application* (provided by a PSE representative or available at PSE.com) and provide PSE electronic files of the plans in a format specified by the PSE representative. Include lot lines and driveways, and omit extraneous information. Also include plans for any frontage road improvements with your application as this may delay the project if it is not received with your application.

Step 2: Design process

Puget Sound Energy will forward your application and supporting materials to our Service Provider who will assign a project manager to the job. The project manager will create the design for gas main, gas service, and metering to serve your facility and apply for appropriate easements and permits. This process requires a minimum of 6 to 8 weeks.

Step 3: Construction scheduling process

When ready, you will coordinate your construction schedule needs with the assigned Project Manager.

Customer-provided trenching

You may provide that portion of the mainline **trench** and/or the service line trench on your own property. Customers are not authorized to excavate in the public right-of-way, so PSE will provide any trench that is not located on private property. If you provide your own trench, you are responsible for meeting the requirement of *Gas and Electric Underground Service Installation Requirements (Form 3061)* for a natural gas only installation or *Joint Utility Mainline Trench Excavation Requirements (Form 2809)*, if you plan to have other utilities in the trench with the natural gas line. Both handouts are provided in the back pocket of this handbook.

Gas service line trench excavation requirements

If you are providing the trench for the gas service line, you are responsible for the following requirements (see *Gas and Electric Underground Service Installation Requirements (Form 3061)*):

- Determine a trench route and meter location and obtain approval for both from PSE.
- Before any digging project, contact the 811 “Call Before You Dig” hotline two business days before digging. The “Call Before You Dig” law requires anyone digging into the ground to call and have underground utilities located to avoid potential hazards with striking or digging up utility lines.

NOTE: This utility locate is required even if you think you know there are no other utilities where you intend to dig.

- Dig the gas service trench line deep enough to allow for PSE’s required minimum depth of cover over the gas service line at final grade. A minimum of 24 inches of cover is required for commercial/industrial service lines that are 1-1/4-inch or larger pipe. In *Snow Country*, a minimum depth of cover of 24 inches is required for any service line installation.
- Providing sand meeting PSE standards for protection of direct-buried gas service pipe. Sand meeting PSE specification is commonly referred to as “builder’s sand” or “building sand” at supplier locations within the PSE service territory. Sand needs to be on-site at the time PSE crews arrive to install the gas line. You must also provide a suitable means of transporting the sand and placing it either beside or in the trench.
- If the trench is to be shared with other utilities, a lateral separation of 12 inches is required between the gas service and power and other utilities.

NOTE: Utilities shall not be stacked in the gas line.

- **Backfilling** the trench to PSE’s standards immediately after PSE installs the gas pipe. Make sure the PSE crew or representative is still on-site to inspect the installation, pressure test, and turn on the gas meter.

Customer-installed gas service conduit

If you dig your own trench for the gas service line and it is not practical to leave the trench open over several days, you can install gas service conduit and backfill the trench, leaving the work pits open (*Figure 2*). This allows PSE to insert the gas service pipe in the conduit on the arranged schedule date with minimal disruptions to you.

Gas service conduit installation requirements

If you are installing your own natural gas service conduit in a joint trench or a natural gas only trench, you are responsible for the following requirements. (For trench line details and additional requirements, see *Gas and Electric Underground Service Installation Requirements (Form 3061)*.)

- Determine a trench route and meter location and obtain approval for both from PSE.
- Before any digging project, contact the 811 “Call Before You Dig” hotline two business days before digging. The “Call Before You Dig” law requires anyone digging into the ground to call and have underground utilities located to avoid potential hazards with striking or digging up utility lines.
NOTE: This utility locate is required even if you think you know there are no other utilities where you intend to dig.
- If the trench is to be shared with other utilities, a lateral separation of 12 inches is required between the gas conduit and power, and 6 inches between the gas conduit and phone, cable, and other utilities.
NOTE: Utilities shall not be stacked in the gas line.
- The top of the conduit must be buried deep enough to allow for PSE’s required minimum depth of cover over the gas service line at final grade. A minimum of 24 inches of cover is required for commercial/industrial service lines that are 1-1/4-inch or larger pipe. In Snow Country, a minimum depth of cover of 24 inches is required for any service line installation.
- Use white or yellow Schedule 40 PVC for a gas service. You must use conduit that has a smooth wall and is not perforated. The markings on the conduit shall **not** contain any reference to any other utilities (such as water or sewer). See *Table 1* for proper sizing requirements.

Continued on next page

- It is preferable that directional changes in the service route be at 90 degrees. It is recommended that the combined degrees of bend do not exceed 180 degrees. See *Table 1* for minimum bending radius for conduit turns.

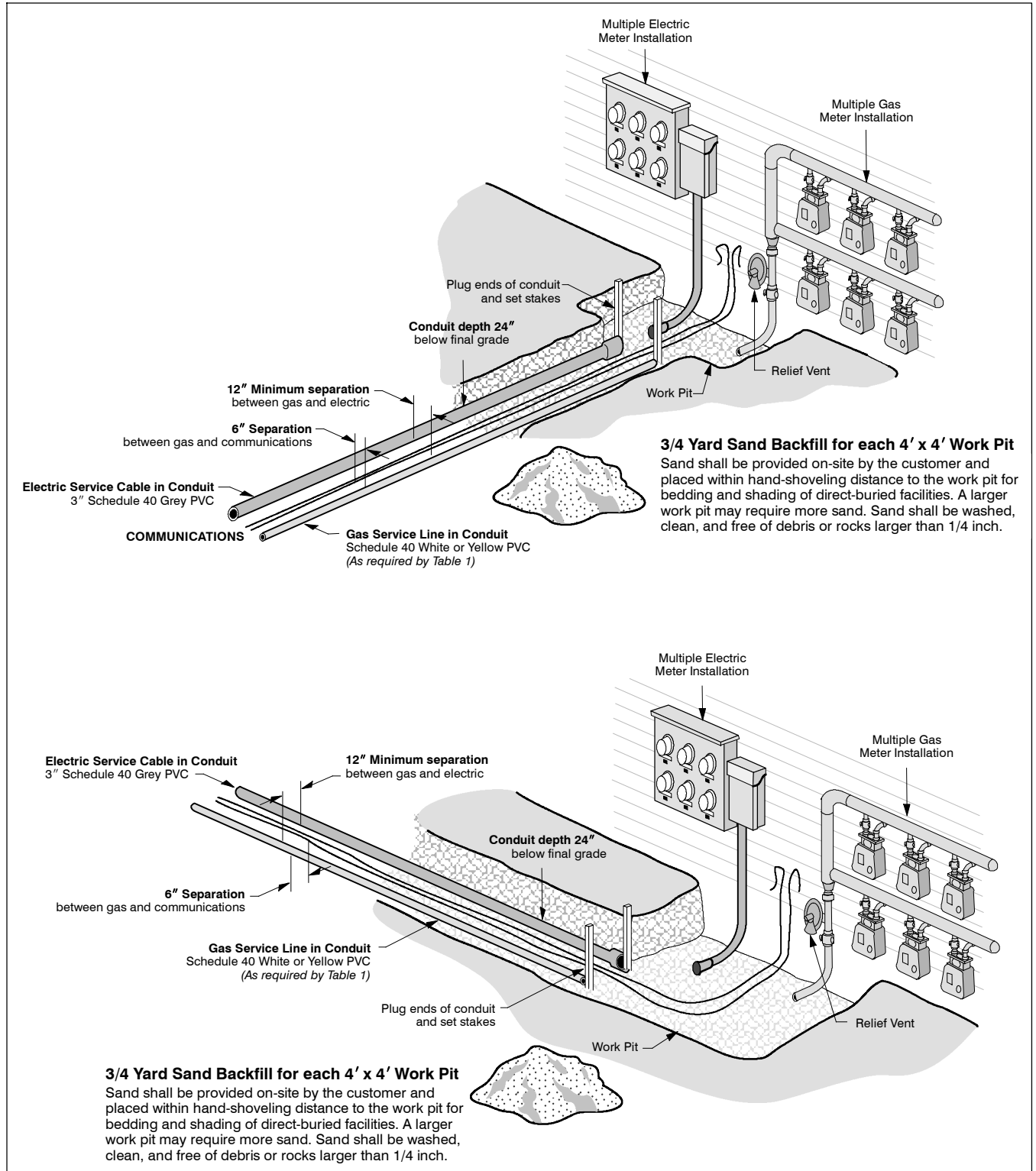
Table 1 Proper conduit sizing and bending requirements of plastic gas service pipe

Gas Service Size (in.)	Min. Bending Radius (in.)	Min. Conduit Diameter (in.)
1-1/8	36	2
1-1/4*	48	3
2	60	4
4	113	6

* Minimum service size for commercial installations.

- If the conduit length is greater than 100 feet, place a pull rope inside for installing the gas pipe (3/8-inch diameter minimum rope).
- Provide sand meeting PSE standards for protection of the direct-buried portion of the gas pipe at the work pits. Sand meeting PSE specification is commonly referred to as “builder’s sand” or “building sand” at supplier locations within the PSE service territory. Sand needs to be on-site at the time PSE crews arrive to install the gas line.
- PVC conduit should extend to the work pits, but stop 4 feet shy of the building wall and 4 feet shy of the gas main stub at the front property line.
- Dig to within 1 foot of the gas stub marker at the front property line. Do not expose gas pipe or stub. If accidentally exposed, cover the gas line stub with a minimum of 12 inches of sand.
- The trench should be left open at both ends for PSE to install the service. A 4-foot by 4-foot work pit opening is recommended (*Figure 2*).
- Conduit ends should be sealed shut and clearly marked using a piece of conduit or 2-inch by 4-inch stake marked “Gas.”
- Use soil backfill that is free from construction debris, sharp rocks, glass, frozen clods, and rocks larger than 10 inches in diameter.

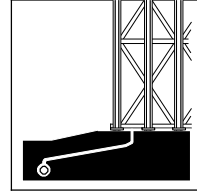
Figure 2* Typical commercial/industrial/multifamily joint utility service trench with customer-installed gas service conduit



* Figure 2 illustrates suggested meter layouts. Upon project manager approval, the locations of the gas and electric meters may be reversed to prevent underground crossovers of electric and gas lines.

Chapter 4

Meter Installation



Before Puget Sound Energy can start the natural gas meter installation, you must mark the gas meter location with the gold *Gas Meter Location* sticker (*Form 1461*) (provided in the back pocket of this handbook).

Selecting a gas meter location

Safe installation and operation of your gas service equipment is PSE's primary concern. An approved natural gas meter location is one that is in accordance with regulatory requirements and meets PSE's construction standards. A good meter location is one where the meter is:

- Easy to read and inspect.
- Accessible for turn-on, shutoff, maintenance, change, or removal.
- Protected against electric sparks, excessive temperatures, flames, and mechanical damage.
- Adequately ventilated.

Required location

PSE requires that you locate the meter outside, alongside the building, and close to the source of gas supply.

NOTE: Inside meter locations are used *only* with Puget Sound Energy's *approval*.

Acceptable meter locations

The following meter locations present access problems or could expose the meter to accidental damage. We require that you avoid the following locations:

- Public passageways or fire escape routes.
- Under a stairway or walkway.
- On building rooftops.
- Unventilated, confined, or inaccessible places.
- Under openable windows (because of *regulator* relief).
- Directly adjacent to vehicular driveways, delivery doors, or high traffic areas where the meter may be subjected to vehicular damage. (Guard posts may be required if such locations are unavoidable. See *Gas Meter Clearances and Service Installation Requirements (Form 3885)*.)

NOTE: Talk to your local PSE project manager for protection that may be required for your meter from flooding, snow, or ice. For service installations in Snow Country, see *Gas Meter Protection from Snow and Ice in Snow Country (Form 3736)*.

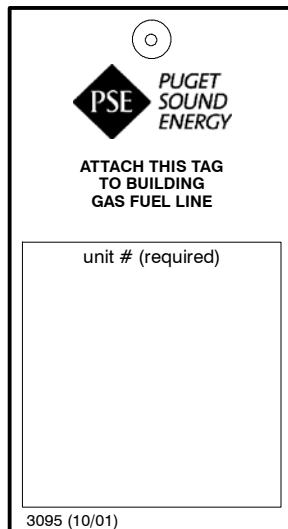
Minimum meter clearance requirements

Minimum clearances are measured from the relief vent, the relief vent stack, or the gas meter set assembly. The relief vent or vent stack exhausts natural gas safely into the atmosphere in the event that the regulator on the meter fails to work properly. The diagrams and the measurements provided in *Gas Meter Clearances and Service Installation Requirements (Form 3885)* (provided in the back pocket of this handbook), show the required minimum distances between building features and the relief vent or meter set assembly.

Marking fuel lines

On multifamily structures, the builder/plumbing contractor must mark the fuel lines with their corresponding unit numbers (use *Form 3095*, as shown in *Figure 3*). PSE crews will mark each meter with the corresponding unit number. Call your CCS representative for forms.

Figure 3 Yellow Unit Number Tag (Form 3095)



Improper electrical grounding

Natural gas *risers*, up to and including the meter set, should not be used as a grounding electrode. An electrical ground connection to a natural gas riser could result in a hazardous condition and can compromise PSE's Corrosion Protection System.

Meter set assembly selection

To begin the meter set selection process, fill out the *Customer Equipment Worksheet*, provided by the project manager. The information on the worksheet helps the project manager to determine the maximum and minimum load and delivery pressure of the natural gas service.

Meter set assembly selection is determined by the customer's immediate needs. This optimizes meter accuracy and minimizes installation costs.

However, if a customer plans to add load in the near future *and* if the meter set assembly sized for the future load will adequately measure the present load, Puget Sound Energy will specify a meter set assembly based on the future load.

The most common meter set assemblies are the diaphragm and rotary (*Figures 4 and 5*). If your commercial structure has multiple tenants, you may require a *manifold* meter set (*Figure 6*). Your individual installation may be different.

Figure 4

Typical commercial/industrial diaphragm-type gas meter set assemblies

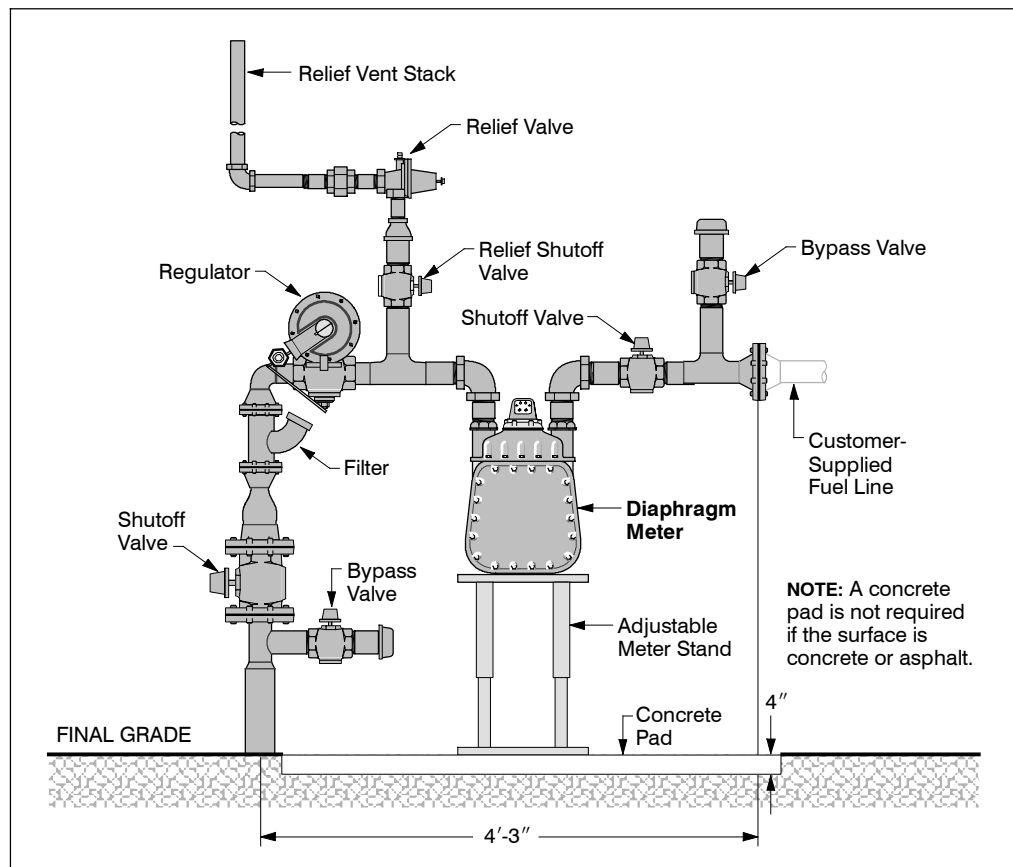


Figure 5 Typical commercial/industrial rotary-type gas meter set assemblies

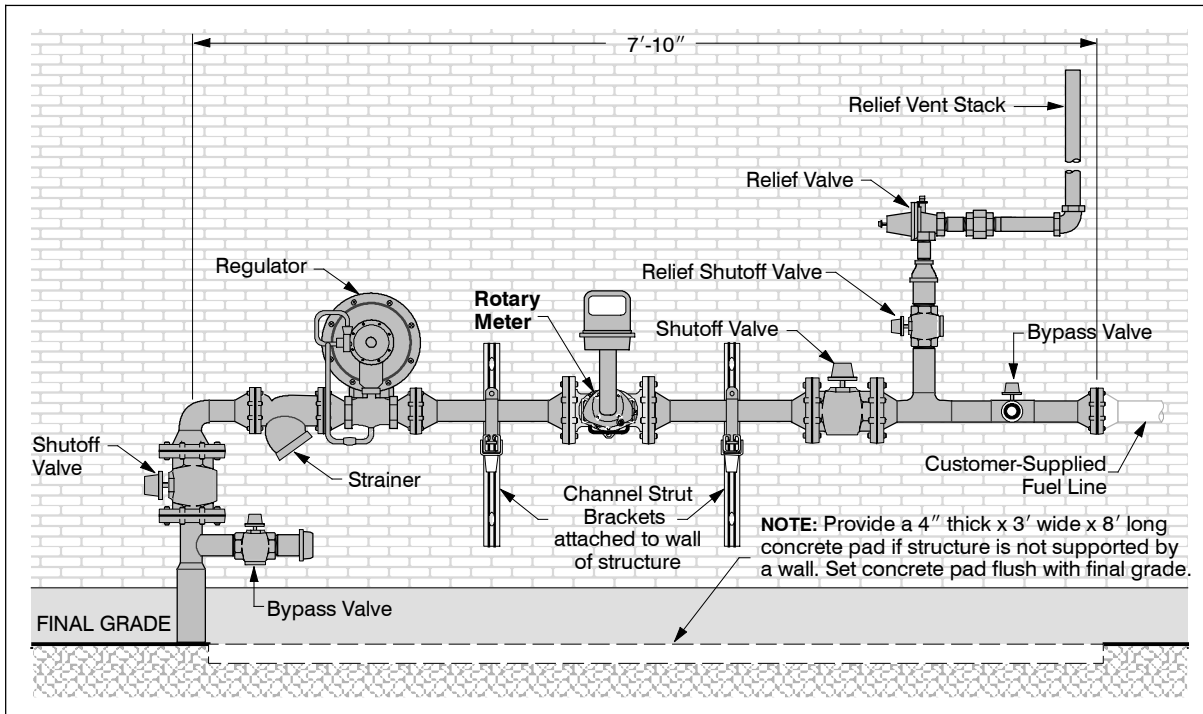
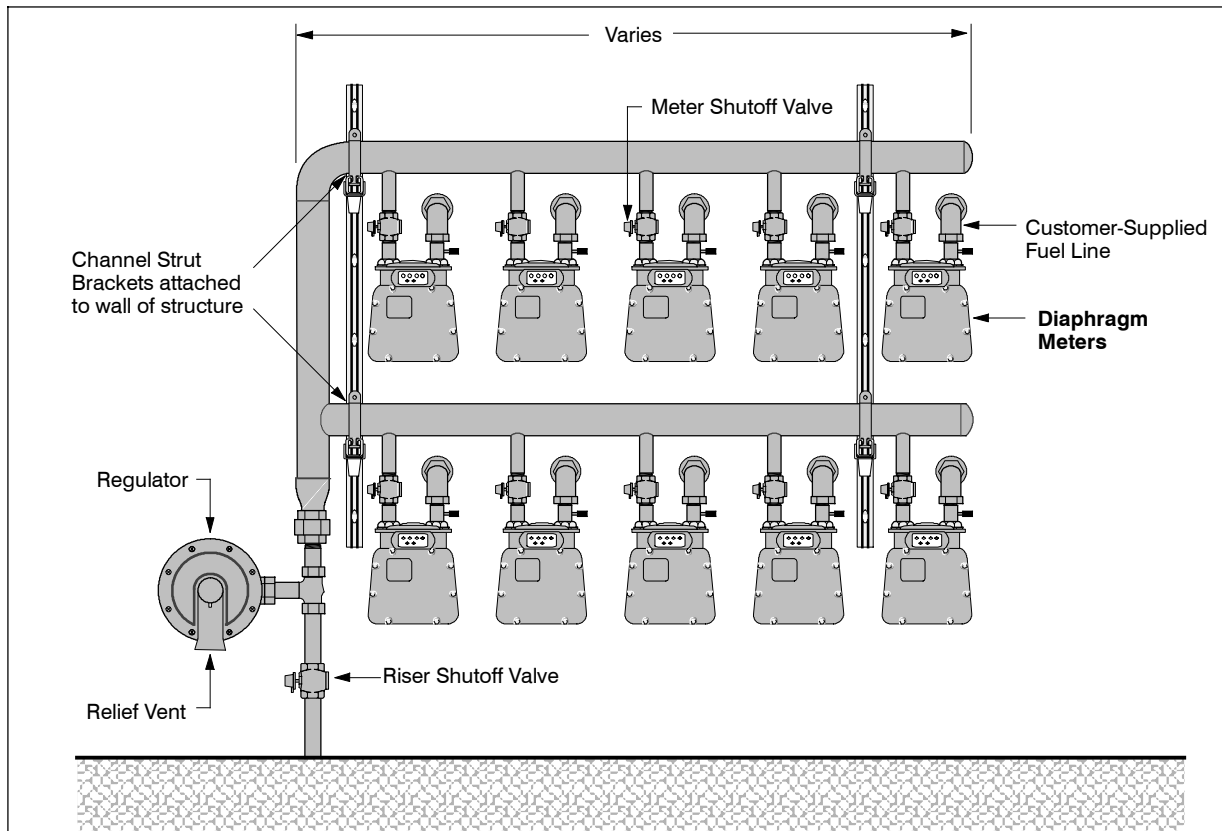


Figure 6 Components of a typical 250 manifold meter set assembly for a commercial structure with multiple tenants or multifamily



Meter installation

The service line, riser, and gas meter can be installed once the customer has determined and marked the gas meter location with *Form 1461*, the gold *Gas Meter Location* sticker, or has stubbed out the fuel line. See previous section for guidance in selecting the appropriate meter location.

When PSE installs the gas meter, the following components will be installed:

- An orange **WARNING** tag will be attached above the locked riser shutoff valve (see *Figure 7*).
- The **riser shutoff valve** will be locked in the CLOSED (off) position. Removal of this lock or operation of this valve by unauthorized persons may damage this equipment and is prohibited. See *Figures 8* and *9*.
- The **meter outlet valve** will be in the CLOSED (off) position (depending on gas load, the meter configuration may change). See *Figures 8* and *9*.

Figure 7

Orange **WARNING** tag

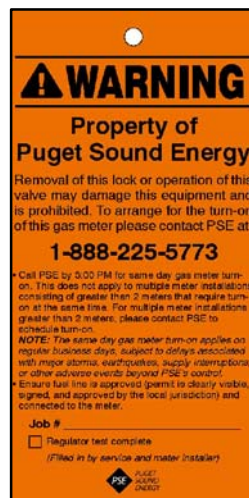


Figure 8

New 250 meter set assembly installation

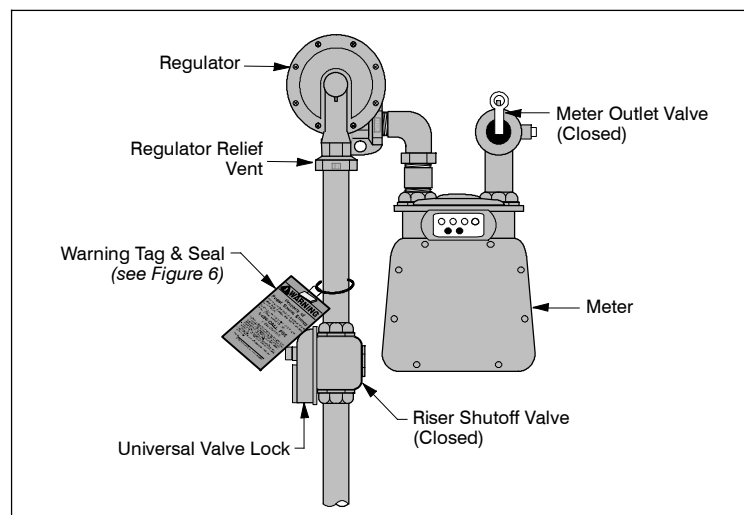
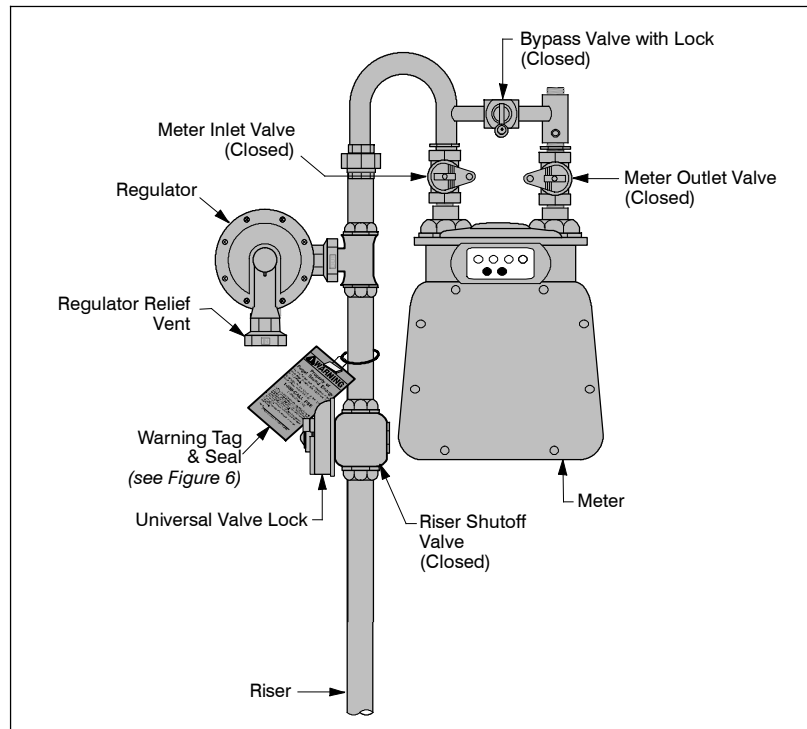


Figure 9 New 425 through 1000 gas meter set assembly



Meter turn on

Before the gas meter can be turned on, the fuel line shall be inspected and approved (permit signed and approved by the local administrative authority).

To arrange for the gas meter turn-on, please call PSE at **1-888-225-5773**. Call by 3:00 p.m. for same day gas meter turn-on for up to two meters. For facilities with more than two meters, call PSE to schedule meter turn-on.

NOTE: This applies on regular business days, subject to delays associated with major storms, earthquakes, supply interruptions, or other adverse events beyond PSE's control.

PSE will turn on the gas meter and verify operation of new gas appliances.

Figures 10 and 11 show a typical small-load gas meter installation after the meter has been turned on.

Figure 10 Typical 250 gas meter set assembly for small loads

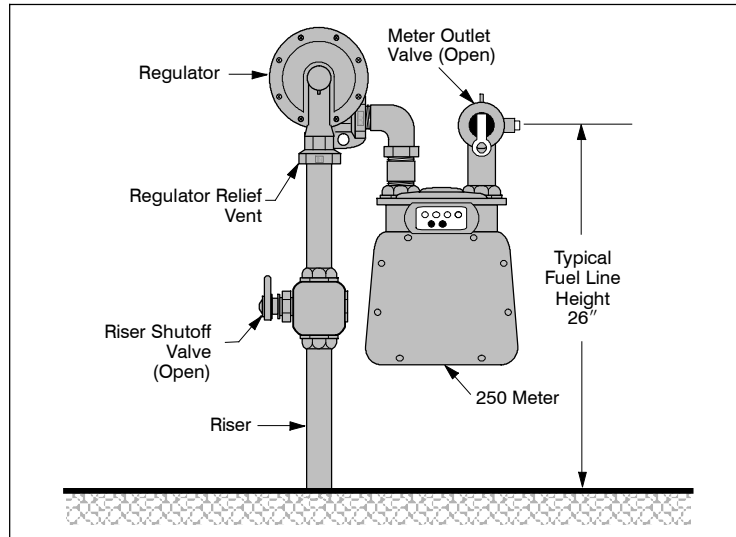
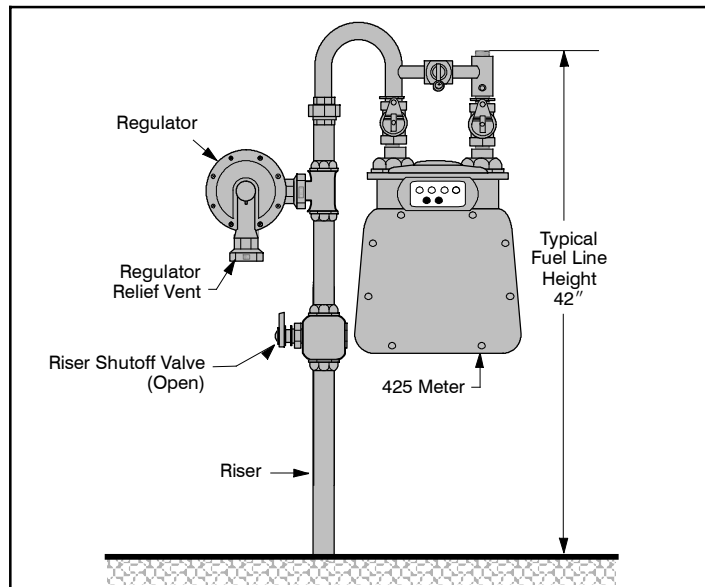
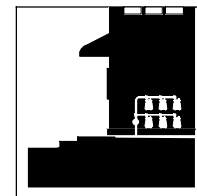


Figure 11 Typical 425 through 1000 gas meter set assembly



Chapter 5



Pressure Gas

What is “pressure gas”?

The standard delivery pressure for Puget Sound Energy is 6 inches of water column (w.c.), which is approximately 1/4 pound per square inch (psi). This is the lowest delivery pressure provided by PSE. Anything higher than 6-inch w.c. is considered “pressure gas” or “pressure delivery.”

In addition to 6-inch w.c., the most common pressures used by multifamily, commercial, and industrial customers are 2 psi and 5 psi. (Higher pressures are also available by special request based on application.)

NOTE: Pressures other than those listed above require special review and approval by PSE’s Industrial Meter Operations project manager and Gas System Integrity engineer.

If you desire pressure delivery, discuss the requirements with your Customer Construction Services (CCS) representative.

Requirements for pressure delivery

For your safety and to maintain system integrity, the following basic requirements must be met before PSE can provide you with pressure delivery:

- PSE must be assured that providing such service is not detrimental to the Company or its other customers.
- Your use of such service is or will be in accordance with PSE’s rates, tariffs, and standards.

See *Customer Requirements - Above 6-Inch w.c. Pressure Gas Delivery (Form 3142)*, to determine the specific requirements for the delivery pressure you are requesting.

Upgrading facilities to accommodate pressure delivery

Occasionally, existing Puget Sound Energy gas facilities (such as mains, services, or meter set assemblies) are not adequate to meet the new or additional pressure delivery requirements of multifamily, commercial, or industrial customers. Existing customer-owned fuel line and other equipment may also be undersized if load is being added.

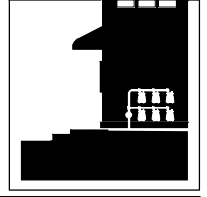
There are various solutions to this problem. PSE may choose to:

- Increase the size or pressure of the gas mains.
- Increase the size of the service piping.
- Increase the metering capacity of the existing meter set assembly.

Usually, the customer bears the cost for such upgrades. Any necessary changes to your fuel line are your responsibility.

Chapter 6

Programs Offered by Puget Sound Energy



Energy Efficiency Programs

PSE offers an array of energy efficiency programs to help reduce your energy consumption and save you money.

These programs range from cash rebates and grants to energy use calculators that keep track of your monthly energy usage. The power to conserve and save is in your hands. Ask the Energy Advisors about the programs that are available for your project.

Call an **Energy Advisor** at **1-800-562-1482**, Monday thru Friday, 8 a.m.–5 p.m., or visit our web site at **PSE.com**.

Contractor Referral Service™

Puts you in touch with quality equipment and services

These days, consumers have many energy-related choices for their homes or businesses. The questions are endless, from choosing heating and cooling systems to insulation, roofing, fireplaces, heat pumps, windows, or water heaters.

PSE created the Contractor Referral Service to assist you in the decision-making process of choosing energy efficient equipment and to help you in selecting prescreened independent contractors.

The Contractor Referral Service has prescreened independent contractors who have satisfied 15 eligibility criteria, including knowledge and experience, financial stability, certifications and bonding, and customer satisfaction.

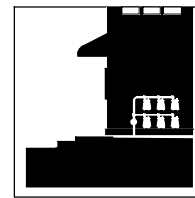
For more information about the Contractor Referral Service, contact an **Energy Advisor** at **1-800-562-1482**, Monday thru Friday, 8 a.m.–5 p.m., or visit our web site at **PSE.com**.

Gas heating system inspection for your furnace

Puget Sound Energy recommends regular inspection and maintenance of your natural gas heating equipment. Many manufacturers recommend a thorough service of your natural gas equipment every year.

With routine inspections, your natural gas equipment is more likely to operate safely and efficiently year-round. For more details, contact an **Energy Advisor** at **1-800-562-1482**.

Glossary



A9 valve - See *Meter outlet valve*.

Appliance shutoff valve - A valve readily accessible and operable by the customer, located on the fuel line at or very near the appliance.

- **Open position** - Valve handle is parallel with the line.
- **Closed position** - Valve is crosswise or at a right angle to the fuel line.

Approved - Acceptable to the authority having jurisdiction.

Backfill - Earth or other material used to refill a trench. Also, the act of refilling a trench.

British thermal unit (Btu) - Quantity of heat necessary to raise one pound of water one degree Fahrenheit at sea level pressure. The heating quality of the gas.

Carbon dioxide (CO₂) - A gas which is a product of combustion, resulting when carbon unites with sufficient oxygen to produce complete combustion. When natural gas burns completely, it produces carbon dioxide and water vapor, as well as heat.

Carbon monoxide (CO) - A poisonous combustible gas produced by the incomplete combustion of carbon or reduction of carbon dioxide.

Combustion - The process of burning, requiring three components: fuel, air, and ignition temperature.

- **Complete combustion** - Results in carbon dioxide and water vapor; harmless.
- **Incomplete combustion** - Can produce carbon monoxide and aldehydes; potentially hazardous.

Conduit - A buried pipe in which the gas service line may be inserted. Conduit helps protect the gas line from damage and allows gas pipe to be replaced without excavating. Conduit is typically installed for road crossings and for service line installations.

Department of Transportation (DOT) - The federal regulatory agency that governs gas pipeline safety, transportation of hazardous materials, and administers regulations related to highway rights-of-way.

Easement - A document entitling its holder the right to use a specified parcel of property. Easements give Puget Sound Energy the right to install underground natural gas facilities on private property.

Emergency - A situation in which there is an immediate threat to life or property. In the case of natural gas, an emergency is an immediate threat and/or the uncontrolled escape of gas.

Excess flow valve - An excess flow valve (sometimes called an EFV) is a device that is installed in a natural gas piping system that is used to limit the amount of natural gas that travels through the pipe in the event the pipe is severed downstream of the EFV.

Flag lot - A parcel of property that does not connect directly to a public right-of-way (street) except for a narrow strip of land that touches the public street and is used to access the property.

Fuel line - Gas piping from the meter to the appliance that is owned and maintained by the customer.

Ignition temperature of natural gas - Natural gas ignites at about 1,100 degrees Fahrenheit.

Ignitor - Any device used to light gas. A spark ignitor uses an electric spark generated across an air gap for this purpose.

Joint utility trench - Two or more utilities occupying a common trench.

Landlocked lot - A parcel of property that does not connect directly to a public right-of-way (street) and must have an easement to cross another parcel of land to access the property.

Load (Gas) - The connected load is calculated by totaling the Btu rating for all gas appliances connected to the meter.

Main (Gas) - The distribution line (or pipe) that serves as a common source of supply for more than one service line. Owned and maintained by PSE.

Mercaptan - An organic chemical odorant added to natural gas to give it a distinctive smell to alert customers in the case of leaks. Natural gas is odorless in its natural state. Mercaptan smells something like rotten eggs.

Meter - A device for measuring and recording the volume of gas used.

Meter outlet valve - A positive shutoff valve installed on most residential and small commercial meter set assemblies. The valve is located on the outlet of the meter and is connected to the fuel line.

Methane gas (CH₄) - A hydrocarbon gas that is the main component of natural gas (about 96 percent). It is colorless, odorless, and flammable and the same substance produced in some swamps, sewers, and landfills.

MSA - Meter set assembly.

Natural gas - A naturally occurring mixture of flammable hydrocarbon and nonhydrocarbon gases found in porous geologic formations beneath the earth's surface; often in association with petroleum. It's supplied as a fuel for millions of applications worldwide. The chemical composition is approximately 96 percent methane, 2 percent ethane, and 2 percent inert gases.

Propane gas (C₃H₈) - A colorless flammable gas found in petroleum and natural gas. It is odorized to make it easy to detect (smells sort of like garlic), heavier than air (specific gravity of 1.5), and has 2544 Btu per cubic foot. (Natural gas contains about 1060 Btu per cubic foot.)

Rate - Method of charging for energy usage (for therms used).

Regulator (also Pressure regulator) - A device to lower the gas pressure. District regulators lower the pressure in mains, meter regulators lower pressure at the meter, and appliance regulators lower pressure at the appliance.

Right-of-way - A collection of easements and/or permits allowing the holder to specific limited use of a parcel(s) of property (such as running a gas main through private properties or a dedicated area for use by the public for travel and utilities). This term refers to the land itself, not the right of passage over it (see also: *Easement*).

Riser - The portion of the service that terminates aboveground at the structure to support the meter.

Riser shutoff valve - A positive shutoff valve on all metering and/or service regulating facilities. The valve is located immediately upstream (on the service line side) of the meter set assembly.

- OPEN position - Valve handle is parallel with the line.
- CLOSED position - Valve is crosswise or at a right angle to the fuel line.

Service - The pipe which carries gas from the main to the customer's meter.

Service shutoff valve - A convenient shutoff located outside of the customer's building. If the meter is located outside of the building, the riser shutoff valve may also serve as the service shutoff valve. In some commercial service applications this valve may be buried and located in the right-of-way at the customer's property line.

Snow Country - Geographical locations in Cle Elum and west of Cle Elum in upper Kittitas County.

Stub - A unit of property where gas pipe extends from the main in the right-of-way to the property line; or, if the main is in a 10-foot utility easement for joint trench construction or in any easement of defined dimensions, the stub is that portion of the service from the main to the field side edge of the easement; or, if the main is in an easement that covers the entire parcel or has no defined dimensions, the stub is the first 2 feet of the service.

Therm - A therm of gas containing 100,000 Btu of energy and is roughly equivalent to 100 cubic feet of gas.

Trench - An excavated ditch of specific depth and width into which underground utility lines are installed.

Utility - Includes all wet and dry public or private utilities, including, but not limited to electric, TV, cable, water/sewer, sprinkler system pipe, and building drains.

Washington Utilities and Transportation Commission (WUTC) - The WUTC protects consumers by ensuring that utility and transportation services are fairly priced, available, reliable and safe.

PSE may petition the Commission to add, change, or delete rules and increase or change rates. Customers may request the Commission to resolve a dispute with or a complaint against the Company.

Notes
