

## Eligibility

New commercial facilities, additions or major remodels served by PSE electricity and/or natural gas are eligible for new-construction incentives. Customers who apply for a grant via the whole-building prescriptive approach must be served by PSE electricity. Component incentives, prescriptive (rebates) and custom approaches may be combined.

## How to participate

PSE will review and approve submitted documents at each step. **Early involvement of PSE in the design process is a basic requirement for all projects and may help by providing ideas for more ways to save energy.**

### Steps:

1. Submit a completed application that includes the signature of the owner
2. Get PSE involved early to include information about energy efficiency during the planning and design process
3. Submit the proposed efficiency measures, with the assumed baseline and proposed measure conditions, for initial measure pre-qualification by PSE
4. Submit supporting documentation for pre-qualified measures including the energy-simulation model for the whole-building custom incentives or incremental costs for component incentives
5. PSE determines incentive and savings, then provides a grant agreement to the owner
6. Sign grant agreement before construction begins on the project
7. Submit invoices and other documentation to verify completion of measures
8. PSE visits site and reviews system operation to verify measures are installed
9. PSE sends incentive payment after verification

## PSE is committed to energy efficiency

At PSE, we believe that your participation in this program will benefit your business while helping us achieve our ambitious energy-efficiency goals. For more information about this and other energy efficiency programs, please visit [PSE.com/ForYourBusiness](http://PSE.com/ForYourBusiness) or contact a PSE Energy Advisor at 1-800-562-1482.

### About Puget Sound Energy

Washington state's oldest and largest energy utility, with a 6,000-square-mile service area stretching across 11 counties, Puget Sound Energy serves more than 1 million electric customers and 750,000 natural gas customers. PSE, a subsidiary of Puget Energy, meets the energy needs of its growing customer base primarily in Western Washington through incremental, cost-effective energy conservation, procurement of sustainable energy resources, and far-sighted investment in the energy-delivery infrastructure. PSE employees are dedicated to providing great customer service to deliver energy that is safe, reliable, reasonably priced, and environmentally responsible.

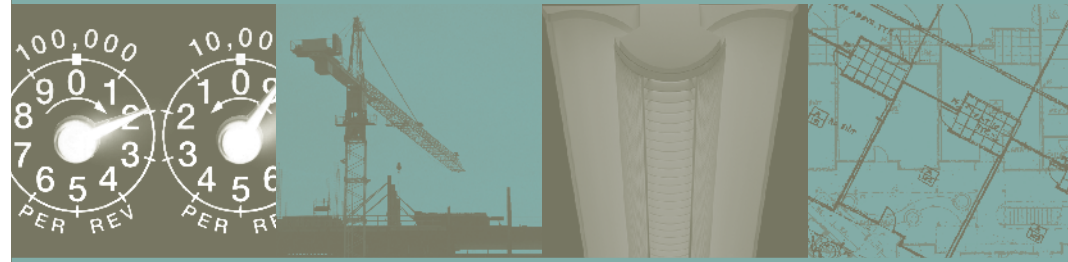


PO Box 97034, EST-10W • Bellevue, WA 98009-9734 • [PSE.com](http://PSE.com)

# Business Energy Management

## NEW CONSTRUCTION

Receive funding for energy-efficiency measures in new construction or major renovations



[PSE.com](http://PSE.com)



# Overview

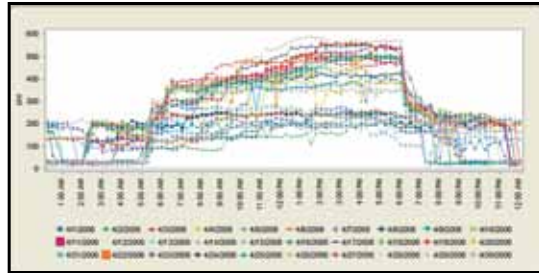
New construction projects offer exceptional opportunities for implementing energy-efficient systems and equipment. Energy-efficient buildings benefit their owners, their occupants and their communities. With lower operating costs and productive work environments, these buildings are attractive to both tenants and employees.

PSE provides new construction grants of up to 70 percent of the difference between the cost of building to code or standard practice, and the cost of energy-efficient features. With PSE's incentives, energy-efficiency measures are more affordable and valuable in new construction projects. Funding is available for projects that exceed energy code requirements and there is an incentive for utilizing third-party commissioning.

## Services

Getting a PSE energy management engineer involved in your project early, during the planning or design phase, can maximize the financial incentives of energy efficiency. Experienced energy management engineers are available to work directly with you, providing independent analysis, information and recommendations on efficiency measures.

Participating customers can get access to PSE's online **Energy Interval Service (EIS)**, an energy-monitoring tool that provides detailed information on your facility's energy-usage patterns. Customers can use this tool at no charge to help optimize the efficiency of a new facility.



EIS Electricity Load Profile: Graph of actual daily electric usage for use in optimizing the efficiency of your new facility.

## Benefits

Energy-efficient buildings can offer:

- Lower operating costs
- Better return on investment
- Improved tenant retention
- Lower carbon footprint
- Increased comfort for occupants
- Support for LEED certification

## Incentives

PSE provides a flexible program to help fund energy-efficient measures for new buildings. There are two core approaches for financial incentives on new construction projects – whole building incentives and component incentives.

Whole-building incentives	
Funding approach	Incentive
<b>Whole-building prescriptive approach for retail, office and school buildings</b>	Incentives are paid per square foot, based on the selected standardized measures and packages. The 2006 based energy code packages are estimated to save at least 10 percent of the energy use of the building. <i>Prescriptive approach is reserved for retail, office and school building types up to 100,000 sq. ft. permitted under WSEC 2006.</i>
<b>Whole-building custom approach</b>	This approach is for large, complex buildings (over 100,000 sq. ft.) and is based on the integrated design principle. Owners utilize energy-simulation tools to evaluate the energy performance of the proposed building compared to the energy code. The incentives are: <ul style="list-style-type: none"> <li>• \$.60 to \$1.80/sq. ft. for 10 to 30 percent energy-efficiency improvements compared to the energy code</li> <li>• Buildings exceeding the energy code by 11 to 29 percent will receive a prorated incentive</li> </ul> <i>Projects heated with natural gas from other providers are eligible for half the incentive and must improve both electric and total building energy use above the 10 percent threshold.</i>

Component incentives	
Funding approach	Incentive
<b>Component prescriptive approach (rebates)</b>	Standardized incentives (rebates) are available for various technologies and end uses.
<b>Component custom approach</b>	Incentives up to 70 percent of the incremental cost for improvements in energy efficiency are provided for individual measures. The grant is determined using energy savings estimates and incremental measure cost data.

Energy-efficiency building commissioning	
Funding approach	Incentive
<b>Energy-efficiency building commissioning</b>	Incentives for third-party building commissioning (including design, construction and post-occupancy phases) are up to \$.50/sq. ft. The maximum incentive is up to 50 percent of the commissioning agent's fee as it relates to energy efficiency.