

Leading the way in clean, renewable energy

Puget Sound Energy is undergoing the most significant transformation in our history as we strive to meet Washington state's clean energy laws — some of the most ambitious in the nation. Wind power is an important part of that journey.

PSE currently owns four large wind farms and has power purchase agreements (PPAs) with five facilities that are either operational or in development. Together, these facilities will generate more than 2,800 MW of renewable energy and help PSE create a clean energy future for all.



Wild Horse Wind and Solar Facility

Situated at 3,500 feet of elevation on Whiskey Dick Mountain, Wild Horse is located in Central Washington, 17 miles east of Ellensburg.

- This 273 MW facility came on-line in December 2006 and was expanded in 2009.
- The 149 wind turbines are capable of producing power in wind speeds ranging from 9 to 56 mph.
- The Wild Horse Renewable Energy Center is open April - Oct. 31 and offers 360 degree views, with free guided tours each day at 10 a.m. and 2 p.m. Call 509-964-7815 or email wildhorse@pse.com for details.
- Recreation and hunting are allowed at Wild Horse. Visit pse.com/wildhorse for more information.



Hopkins Ridge Wind Facility

Hopkins Ridge is located in Southeast Washington, centered about 12.5 miles northeast of Dayton, Columbia County—or approximately 285 miles southeast of Seattle.

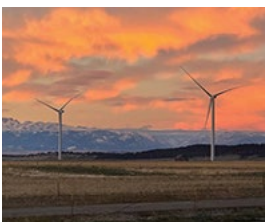
- This 156.6 MW facility was built in 2005 and expanded three years later.
- Its 87 wind turbines, support structures and access roads only cover about 100 acres of the site's 10,000 total acres. The remaining land is available for farming and livestock grazing.
- The facility's land is open for recreational use for visitors with written permission. Please see instructions available pse.com/hopkinsridge.



Lower Snake River Wind Facility

Lower Snake River Wind Facility is located in Southeast Washington, centered about 12 miles west of Pomeroy, Garfield County—or nearly 300 miles southeast of Seattle.

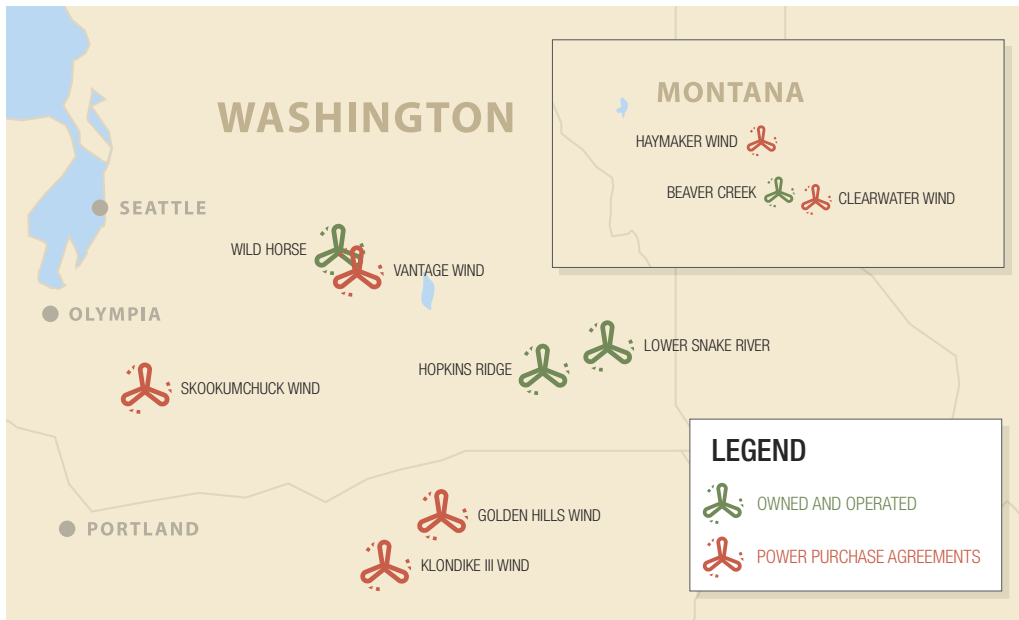
- This 342.7 MW facility came on-line in early 2012 and is PSE's largest owned wind-power operation.
- Its 49 wind turbines and two substations cover only about 200 acres of the site's 21,610 total acres. The remaining land is available for agriculture or the conservation reserve program.
- Guided tours are available by appointment. Call 509-382-2043 to contact the facility directly.
- The facility's land is open for recreational use for visitors with written permission. Please see instructions available pse.com/lowersnakeriver.



Beaver Creek Wind Facility

Beaver Creek is located in the high plains of Stillwater County, Montana.

- This 248.16 MW facility is PSE's newest wind-power operation and is expected to power about 67,776 homes a year.
- Its 88 turbines, and one substation, are spread over approximately 15,000 acres of agricultural land.
- Construction began in spring 2024, and the facility is expected to be operational in 2025.



PSE-owned facility details

	Wild Horse	Hopkins Ridge	Lower Snake River	Beaver Creek
Capacity	273 MW	156.6 MW	342.7 MW	248 MW
Average number of households served by output annually*	60,000	35,000	70,000	67,776
Total number of turbines	149	87	149	88
Turbine height (from ground to tip of vertical rotor blade)	351 feet	351 feet	423 feet	499 feet
Blade length	128 feet long	128 feet long	160.76 feet long	208 feet long
Rotor speed	16.5 rpm	16.5 rpm	6-16 rpm	Ranges between 7.4 and 15.78 rpm

PSE's Power Purchase Agreement (PPA) facility details

Skookumchuck Wind - 137 MW

- Powering PSE's Green Direct Program since 2020
- Located in Lewis and Thurston Counties, WA

Golden Hills Wind - 220 MW

- Operating since 2021
- Located in Sherman County, OR

Clearwater Wind - 350 MW

- Operating since 2022
- Located in Rosebud, Garfield and Custer counties, MT

Vantage Wind - 90 MW

- Operating since 2009
- PSE will begin purchasing power in 2025
- Located in Kittitas County, WA

Klondike III Wind - 50 MW

- Operating since 2007
- Located in Sherman County, OR

Haymaker Wind - 315 MW

- Coming online in 2028
- Located in Wheatland and Meagher Counties, MT

* Based on the Washington state residential consumption ten year annual average of 11.8612MWh as reported by the US Energy Information Administration (2013-2022 data from forms EIA-861-schedules 4A-D, EIA-861S and EIA-861U)