

Lower Snake River Wind Facility



Recreational access rules and map



Recreational access rules for Puget Sound Energy Lower Snake River Wind Facility

Violation of any of these rules will result in loss of all access privileges and possibly trespassing violations.

No hunting during wind turbine construction periods or posted closure periods.

No access of any kind within 300 feet (100 yards) of the wind turbines, buildings or substations.

No access of any kind within 1,000 feet (333 yards) of the wind turbines from the 3rd Sunday of November through the 3rd Sunday of February due to potential icing conditions.

No pointing or shooting of any weapon at a target of any kind with people, wind turbines, overhead power lines, poles, fences, gates, splice boxes, junction boxes, maintenance vehicles, signs, maintenance facilities, or substation in your scope of view.

No shooting from vehicles, across roads, or from any maintained portion of wind facility access roads.

No vehicle traffic of any kind on Lessors' property except on normally traveled County roads unless authorized in writing by Lessor. Driving on wind-turbine access roads is not allowed. This includes operation of off-road vehicles (ORVs) or all-terrain vehicles (ATVs).

No horses or pack animals are allowed on Lessors' property unless previously authorized in writing by the Lessor.

Do not block access gates or entrances.

All hunters must abide by Washington state game rules and regulations.

All access may be cancelled on lessors' land whenever it is deemed necessary by Lessors or Lessee.

No overnight camping/parking or outdoor fires on Lessors' property unless previously authorized in writing by the Lessor.

Hanging vehicle tags must be clearly displayed and visible from outside of the vehicle while accessing Lessors' property.

Your access permission agreement must be carried on you at all times while accessing the Puget Sound Energy Lower Snake River Wind Facility.

Please remove gut piles to prevent attracting scavenging raptors to the wind farm areas.

Please consider using non-lead ammunitions to prevent lead exposure to scavenging raptors.

To help assure continued access to these lands, please report any violations of rules or laws to the Garfield County Sheriff's Office 509-843-3494 or if an emergency, please dial 911.

pse.com/lowersnakeriver

Puget Sound Energy's Lower Snake River Wind Facility lies on 23,000 acres of farm and rangeland approximately 12 miles west of Pomeroy, Washington, between the Snake River and the Tucannon River. The utility leases the land from private landowners and the state of Washington.

Much of this land is open to public access, special rules are in place. For the safety of visitors, hunters, local residents, and wind-facility workers. The enclosed rules also are designed to protect to the wind farm's equipment.

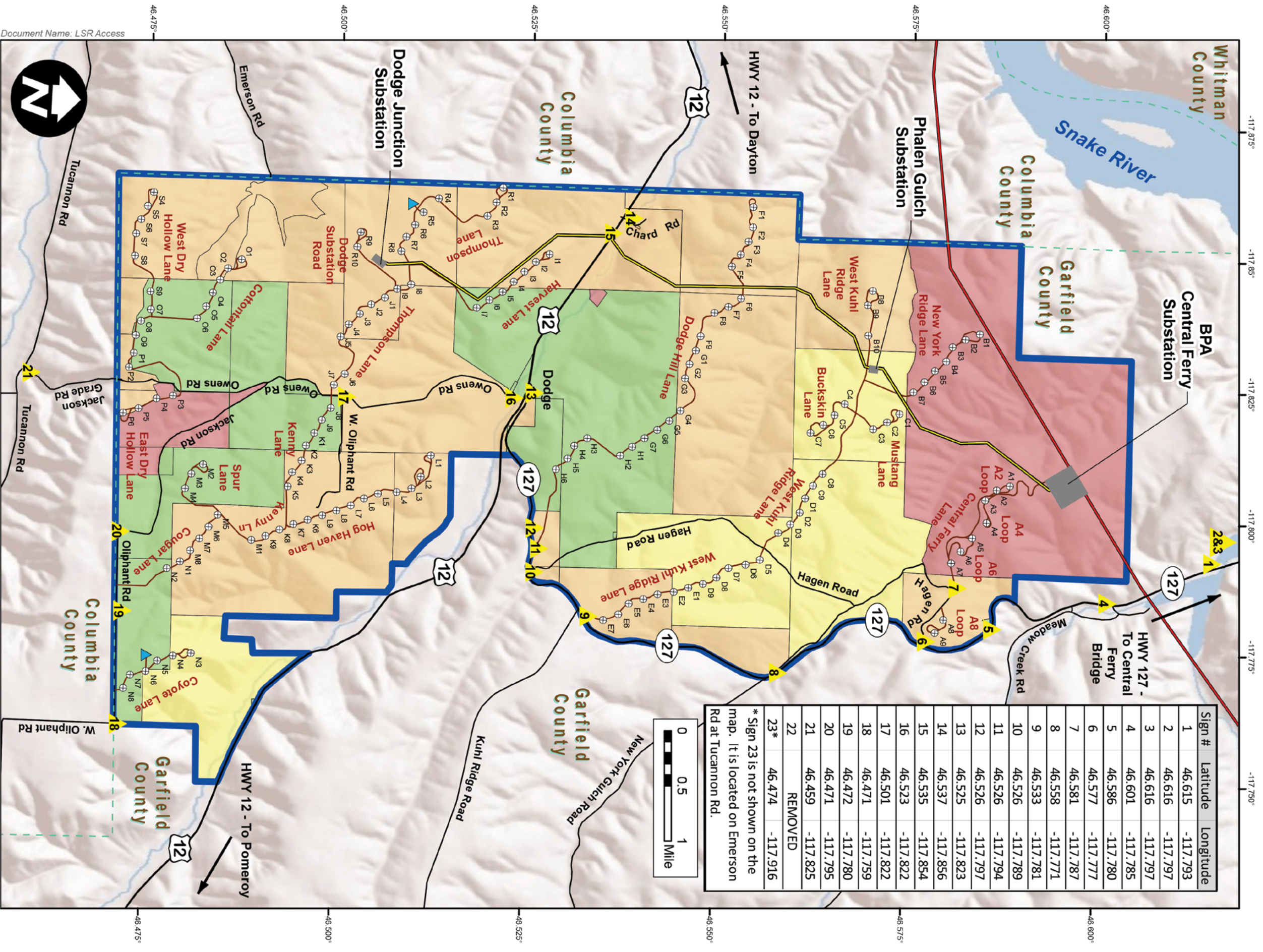


Lower Snake River Wind Facility - Garfield County



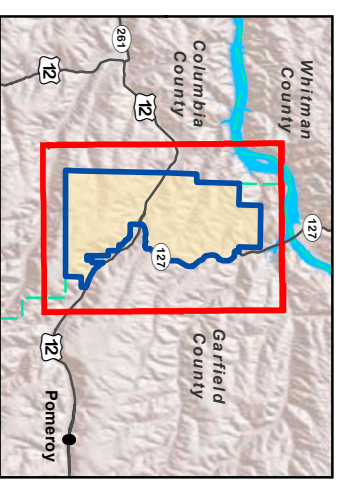
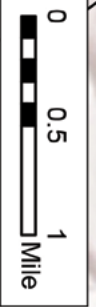
Lower Snake River Wind Facility recreational access map

For additional information contact: Puget Sound Energy's Dayton office at 509-382-2043 or visit pse.com/lowersnakeriver



Sign #	Latitude	Longitude
1	46.615	-117.793
2	46.616	-117.797
3	46.616	-117.797
4	46.601	-117.785
5	46.586	-117.780
6	46.577	-117.777
7	46.581	-117.787
8	46.558	-117.771
9	46.533	-117.781
10	46.526	-117.789
11	46.526	-117.794
12	46.526	-117.797
13	46.525	-117.823
14	46.537	-117.856
15	46.535	-117.854
16	46.523	-117.822
17	46.501	-117.822
18	46.471	-117.759
19	46.472	-117.780
20	46.471	-117.795
21	46.459	-117.825
22	REMOVED	
23*	46.474	-117.916

* Sign 23 is not shown on the map. It is located on Emerson Rd at Tucannon Rd.



- Access with Written Permission (AWWP)
 - Access with Written Landowner Permission (AWWLP)
 - Public Access Unavailable (PAU)
 - Access Prohibited (AP)
 - Access Sign
 - PSE Transmission Line
 - BPA Transmission Line
-
- Facility Boundary
 - ⊕ Turbine
 - ▲ Met Tower
 - Turbine Access
 - Road
 - Highway
 - County Road
 - County Line

Document Name: LSR Access