

Recreational access rules for PSE Hopkins Ridge, PacifiCorp Marengo and PGE Tucannon River Wind Facilities

Violation of any of the rules that follow will result in loss of all access privileges and possibly trespassing violations.

**No hunting** during wind turbine construction periods or posted closure periods.

**No access** of any kind within 300 feet (100 yards) of the wind turbines, buildings or substations.

**No access** of any kind within 1,000 feet (333 yards) of the wind turbines from the 3rd Sunday of November through the 3rd Sunday of February due to potential icing conditions.

**No pointing or shooting of any weapon** at a target of any kind with people, wind turbines, overhead power lines, poles, fences, gates, splice boxes, junction boxes, maintenance vehicles, signs, maintenance facilities, or substation in your scope of view. No shooting from vehicles, across roads, or from any maintained portion of wind facility access roads.

**No vehicle traffic** of any kind on Lessors' property except on normally traveled County roads unless authorized in writing by Lessor. Driving on wind turbine access roads is not allowed. This includes operation of off-road vehicles (ORVs) or all-terrain vehicles (ATVs).

**No horses or pack animals** are allowed on Lessors' property unless previously authorized in writing by Lessor.

**Do not block access** gates or entrances.

**All hunters must abide by Washington state game rules and regulations.**

**All access may be cancelled on lessors' land** whenever it is deemed necessary by Lessors or Lessees.

**No overnight camping/parking or outdoor fires** on Lessors' property unless previously authorized in writing by Lessor.

**Hanging vehicle tags** must be clearly displayed and visible from outside of the vehicle while accessing Lessors' property.

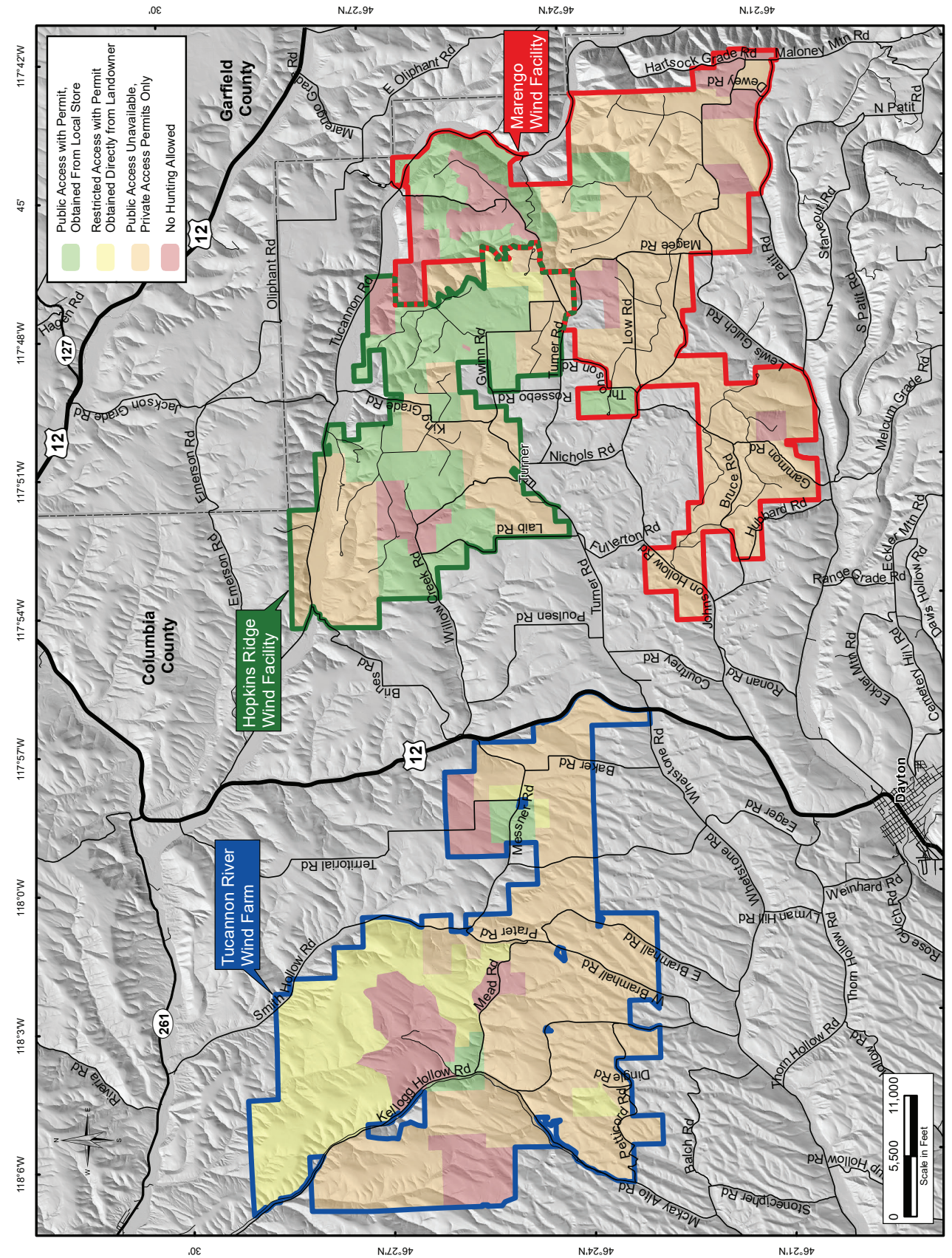
**Your access permission agreement** must be carried with you at all times while accessing the Puget Sound Energy Hopkins Ridge, PacifiCorp Marengo and Portland General Electric Tucannon wind facility areas.

**Please remove gut piles** to prevent attracting scavenging raptors to the wind farm areas.

**Please consider using non-lead ammunitions** to prevent lead exposure to scavenging raptors.

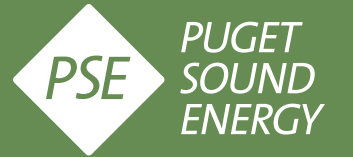
**To help assure continued access to these lands, please report any violations of rules or laws to the Columbia County Sheriff's Office 509-382-1100 or if an emergency, please dial 911.**

PSE.com/HopkinsRidge



Puget Sound Energy's Hopkins Ridge Wind Facility lies on 11,000 acres of farm and rangeland between Dayton and Pomeroy. The utility leases the land from private landowners and the state of Washington.

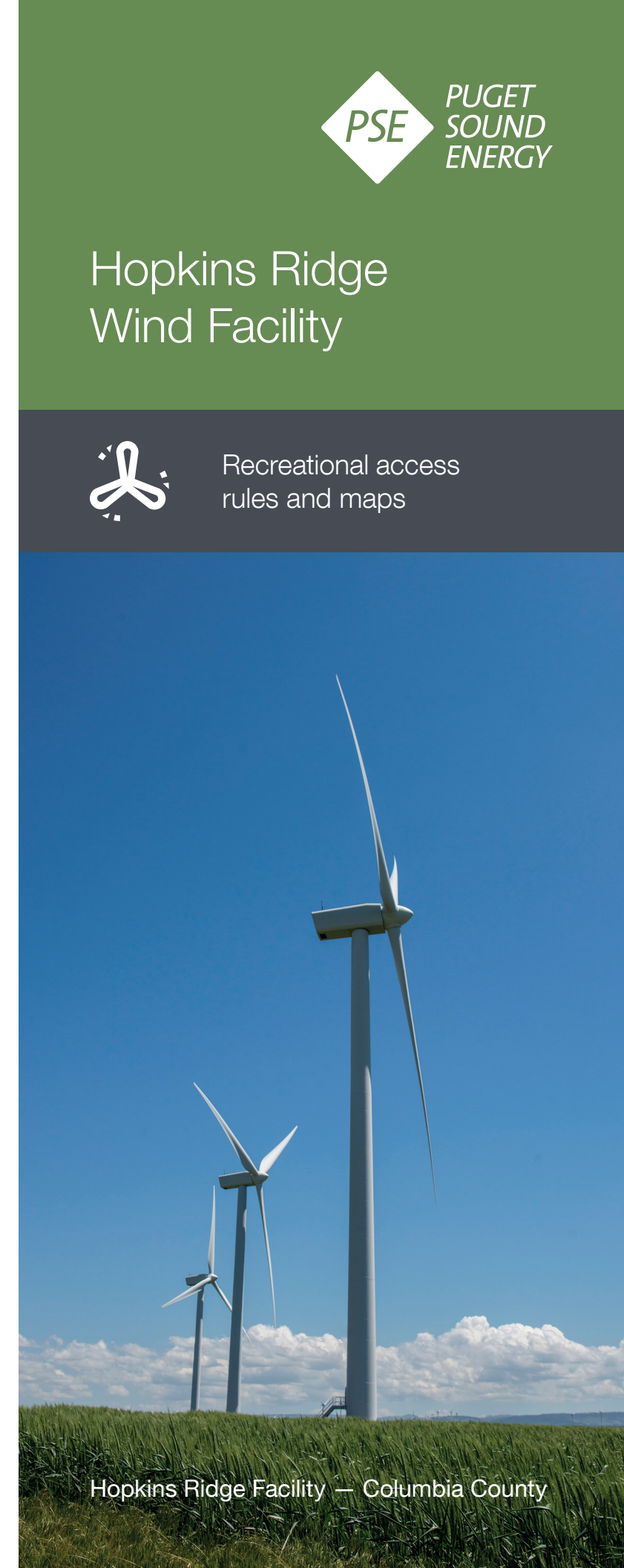
Much of this land is open to public access and special rules are in place for the safety of visitors, hunters, local residents, and wind-facility workers. The enclosed rules also are designed to protect the wind farm's equipment.



# Hopkins Ridge Wind Facility



Recreational access rules and maps



Hopkins Ridge Facility — Columbia County

# Hopkins Ridge Wind Facility Recreational access map

For additional information contact Puget Sound Energy's Dayton office at 509-382-2043 or visit [PSE.com/HopkinsRidge](http://PSE.com/HopkinsRidge)

	Public Access with Permit, obtained from local store
	Public Access with Landowner Permit
	Public Access Unavailable, private access permits only
	No Hunting Allowed
	Access Sign
	Facility Boundary
	Turbine
	Met Tower
	Turbine Access Road
	County Road
	County Line

