

Wildfire preparedness

Ronald, Roslyn, Cle Elum area town hall

June 2022



PUGET
SOUND
ENERGY

Welcome



Tonight's agenda

- ◆ Informational presentation
- ◆ Community dialog
- ◆ Question and answer period

Email our team:

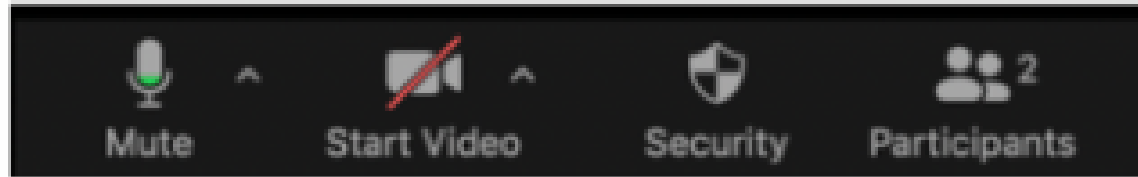
wildfire.response@pse.com

Zoom orientation



Zoom best practices

- ◆ Stay muted
- ◆ Camera on when talking / off during presentation
- ◆ During Q&A, use Raise Hand (may be under Participants button) to ask a question



Zoom orientation

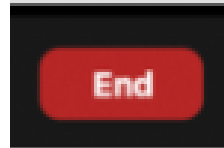
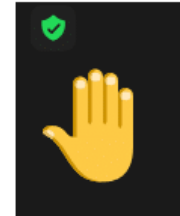
Zoom toolbar



Audio is
NOT muted.
Press to
mute.



Audio is
muted.
Press to
unmute.



Wildfire preparedness

Presenters:

- ◆ Michelle Boll, Wildfire Mitigation Program Manager
- ◆ Jens Nedrud, Manager of Electric System Planning
- ◆ Ryan Murphy, Director of Electric Operations



Why we're here



WILDFIRE MITIGATION
AND RESPONSE PLAN

We're planning ahead

Situational awareness

Fault reduction

Fault protection

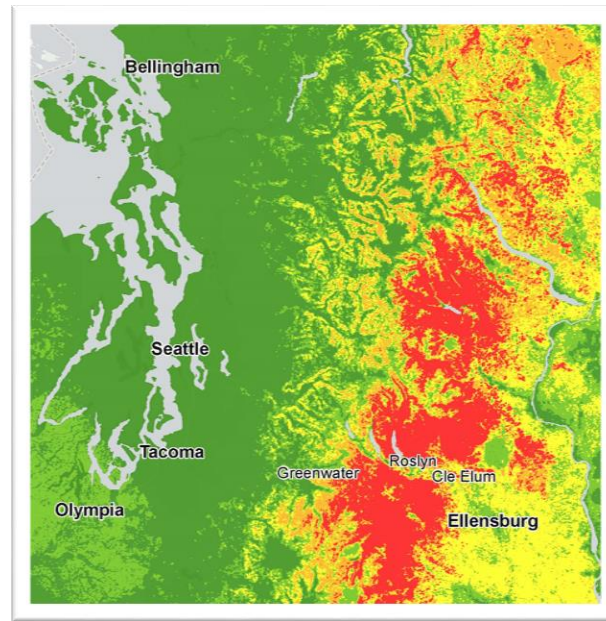
Communication and
outreach

Operational procedures &
emergency response



WILDFIRE MITIGATION
AND RESPONSE PLAN

Situational awareness



USFS Wildfire Hazard Potential

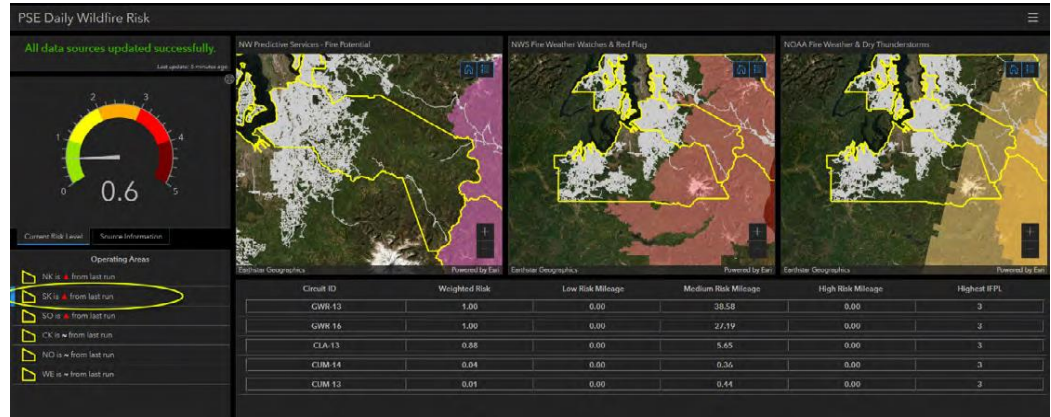
Wildfire Hazard Potential

- None/Very Low
- Low
- Moderate
- High
- Very High

Risk modeling analyzes:

- Wildfire potential, probability, and impact
- Weather patterns and historical data
- Grid infrastructure

Situational awareness



- ◆ Risk modeling
- ◆ Pre-season inspections
- ◆ Real-time dashboards
- ◆ Technology
- ◆ Coordination with partners



Fault reduction & protection

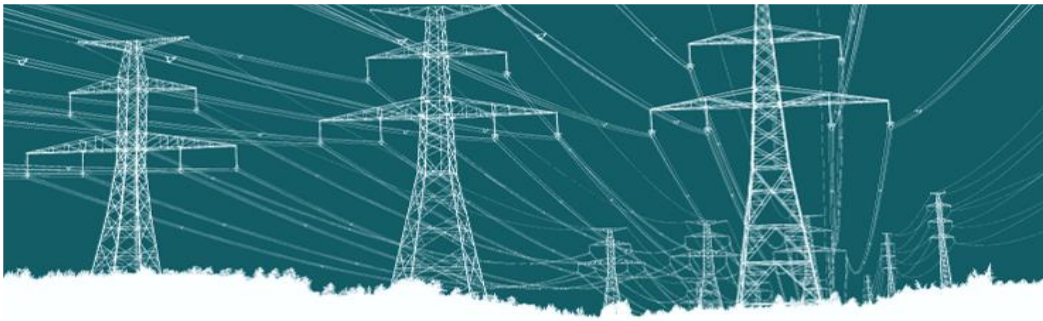


Operational procedures & emergency response



Public Safety Power Shutoffs

(PSPS)

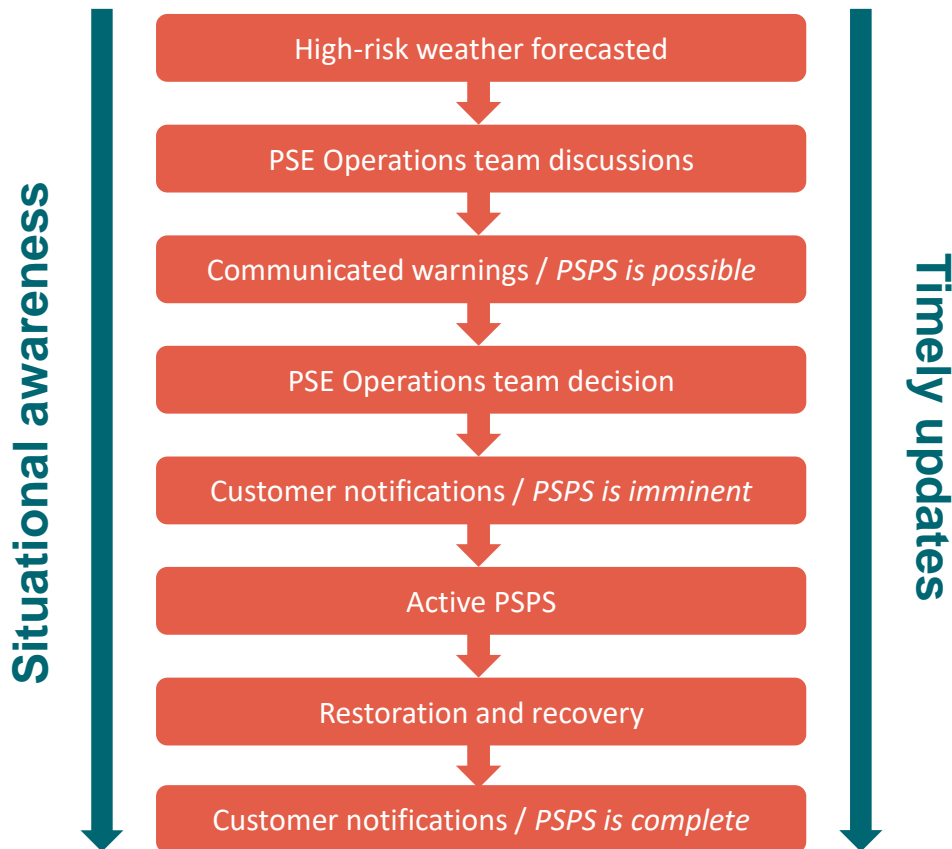


During high-risk conditions, shutting down select power lines can help reduce the risk of wildfires.

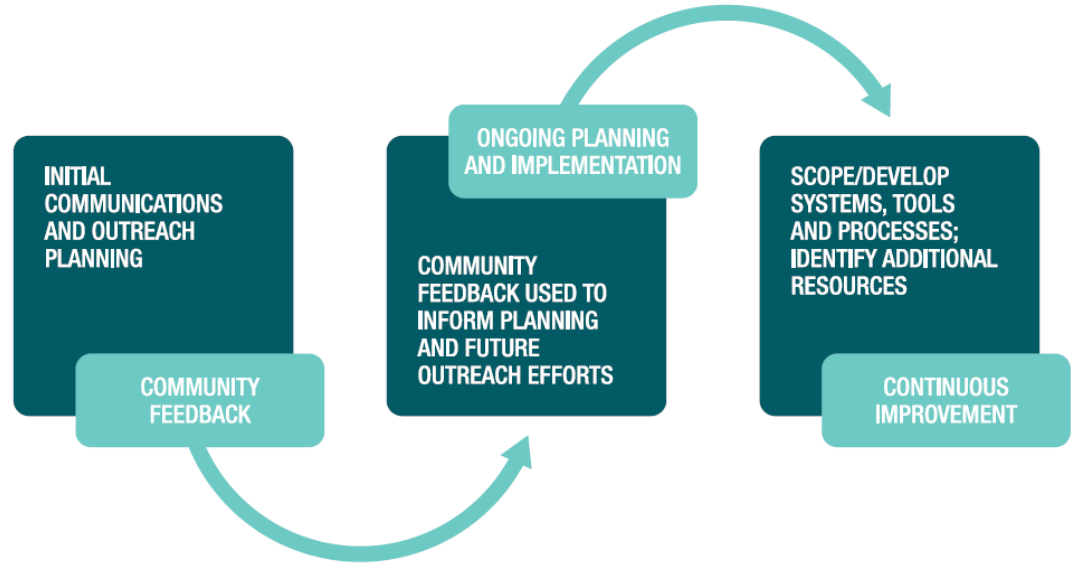
This is called a **Public Safety Power Shutoff (PSPS)**.

- ◆ PSE is developing a PSPS plan
- ◆ Your input is essential to our planning process

Example steps of a conceptual PSPS



Communication and outreach



How you can be involved

- ◆ Notify PSE of danger trees near power lines on your property.
- ◆ Think about preparing for possible power outages, including during wildfires.
- ◆ Tell us how you'd like to receive information.
- ◆ Continue participating in our wildfire planning process, including tonight!

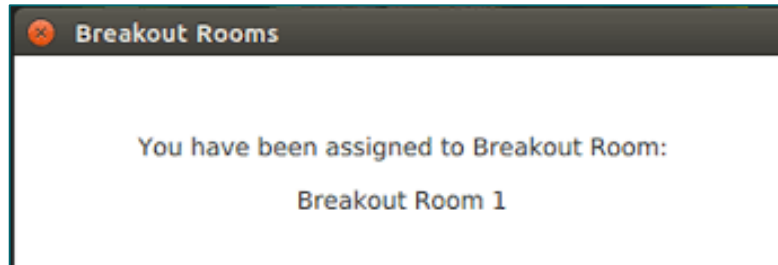
We'd like your thoughts

Community dialog

- ◆ Three rounds of conversation in small breakout rooms
- ◆ We'll share in the big session after each round
- ◆ You'll be sent to a different room, with different people for each session
- ◆ You'll have a Table Host join you to share the questions

How breakout rooms will work

- ◆ We'll divide you all into “tables” of about six each
- ◆ You'll be automatically sent to a breakout room
- ◆ You'll be joined by a Table Host who will pose discussion questions
- ◆ After each table discussion, you'll be returned to the big room to debrief the conversations
- ◆ We'll do three rounds of dialog



Community dialog debrief

- ◆ What did you hear that was an “ah-ha”?
- ◆ What was a question you heard a lot?

Thank you for sharing your thoughts, ideas, concerns, and questions!



Communication and outreach

www.pse.com

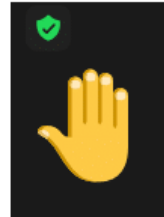
PSE Customer Care

1-888-225-5773

- ◆ Update contact information – email and phone number
- ◆ Let PSE know if you have medical equipment that relies on electricity

Questions?

- ◆ Zoom Q&A features
- ◆ If we don't get to your question tonight, there are other ways to contact the team



Latest information and 2022 plan:
pse.com/wildfirepreparedness

Email our team:
wildfire.response@pse.com

Call our team:
1-888-404-8773

**We'd Like
Your Thoughts**

Community Dialog

ROUND 1

It's hot, really hot out. You can't remember the last time it rained. And now the winds have started to pick up. You have heard that this is a recipe for wildfire, and it's time to be aware and prepared.

Q 1: What thoughts come to mind?

Q 2: Where would you expect to get news?

Q 3: Where do you go to get news about wildfire?

Q 4: How would you want to get information about the wildfire risks and what is being done?

**We'd Like
Your Thoughts**

Community Dialog

ROUND 2

Think about the possibility of having the power turned off from anywhere from a few hours to a few days during high wind periods. This power shutoff would prevent trees and other debris from damaging electric lines and potentially causing wildfires.

Q 1: What comes to mind?

Q 2: What would worry you about having power turned off?

Q 3: How much notice do you need before an emergency power shutoff knowing that alerts will be triggered by unpredictable winds and weather?

Q 4: How would you prepare?

**We'd Like
Your Thoughts**

Community Dialog

ROUND 3

Now the power is off. Think about where you are, what you need, and how you're going to stay informed.

Q 1: How could PSE and its partners help you and your neighbors when the power is out?

Q 2: How do you want to receive information?

Q 3: How frequently would you want to receive updates on the outage?