

# PUGET SOUND ENERGY BUCKLEY SUBSTATION AND TRANSMISSION LINE PROJECT



## Dear valued customers,

The Buckley community is experiencing significant residential and commercial growth. To increase electric system reliability, PSE plans to build a new electric substation on 112th Street East and demolish the existing substation on North 3rd Street downtown.

The existing Buckley substation is reaching the end of its useful life, making it more susceptible to equipment failure and reliability issues over time. Additionally, the existing substation currently operates at a voltage of 55 kilovolts (kV)—a voltage that is becoming obsolete in PSE’s electric system.

The new substation site on 112th Street East provides the space we need to build a new substation that will ensure continued, reliable electric service to our Buckley customers for many years to come. It will operate at our standard 115 kV voltage and enable future operational and maintenance flexibility for our crews.

As part of the construction of the new substation, two segments of new 115 kV transmission line will be constructed along 112th Street East to connect the new substation to the existing transmission system. Additionally, two new segments of underground distribution line will be constructed to connect the substation to the existing distribution system (see map).

The Buckley substation project is part of the larger Electron Heights to Enumclaw electric reliability improvement effort, which includes several independent electric upgrade projects. When complete, the new Buckley substation and transmission line upgrade will increase electric capacity and reliability for nearly 5,000 customers in the greater Buckley community.

## Project map



## Anticipated project timeline and next steps

This year, we’re working with local, state and federal agencies to secure the required permits. We’ll also be reaching out to certain property owners to discuss the acquisition of easements needed to complete the project.

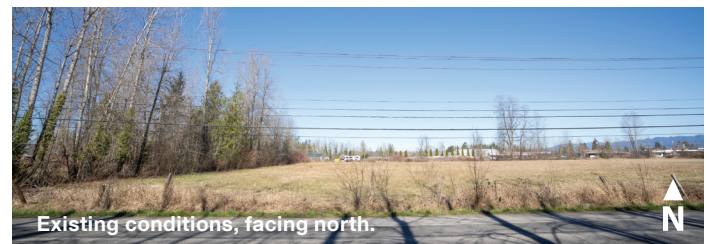
We anticipate construction on this project may begin in mid 2022, followed by restoration and mitigation work. It’s our goal to minimize construction impacts as much as possible, and we will share construction details with the community before construction begins.

As the permitting process begins in the coming weeks, you may see crews working intermittently along 112th Street East to mark utility locates and complete survey work. These survey activities will support design, engineering and permitting activities.

The project web page will be updated regularly with new information as it becomes available.

[pse.com/buckleysubstation](https://pse.com/buckleysubstation)

## Photo simulations of the new substation



March 2021

Re: Buckley substation and transmission line project

Bridie Winger  
1234 Mockingbird Lane  
Wishful, WA 98221-0000

##  
#



# IMPROVING YOUR ELECTRIC SERVICE

## INTRODUCING THE NEW BUCKLEY SUBSTATION

MARCH 2021

For more information or questions  
regarding this project, please contact

**Jeff McMeekin**  
1-888-404-8773  
[major.projects@pse.com](mailto:major.projects@pse.com)