

July 24, 2017

Re: Lake Hills/Phantom Lake Transmission Line

improving your **ELECTRIC SERVICE** ▶▶▶



Improving electric reliability in East Bellevue

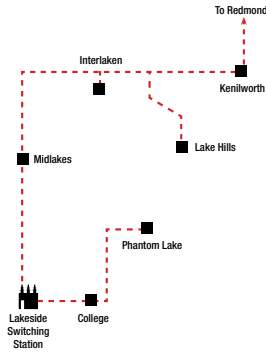
Puget Sound Energy (PSE) is working to improve electric service reliability for more than 12,000 residential and commercial customers in the Crossroads, Robinswood, Lake Hills, Eastgate, College Hills and Phantom Lake neighborhoods.

Due to the regional growth over the last several decades (the region's population has doubled since 1970) the electric system currently serving your neighborhood has limited reliability, increasing the possibility of outages. PSE's Lake Hills, Phantom Lake and College substations are each served by only one transmission line. If that single line serving these substations goes out or requires maintenance, all customers served by that substation lose power.

Our current design and operating standards require that each electrical substation be served by two transmission lines, creating redundancy. If one transmission line loses power, the other can pick up the load and keep the lights on for our customers.

Lake Hills-Phantom Lake 115 kV Transmission Line Loop

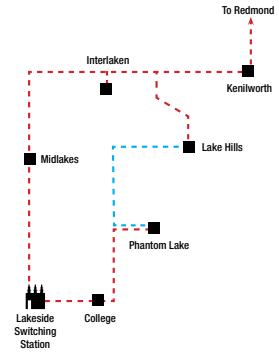
Existing Conditions



Existing Conditions:

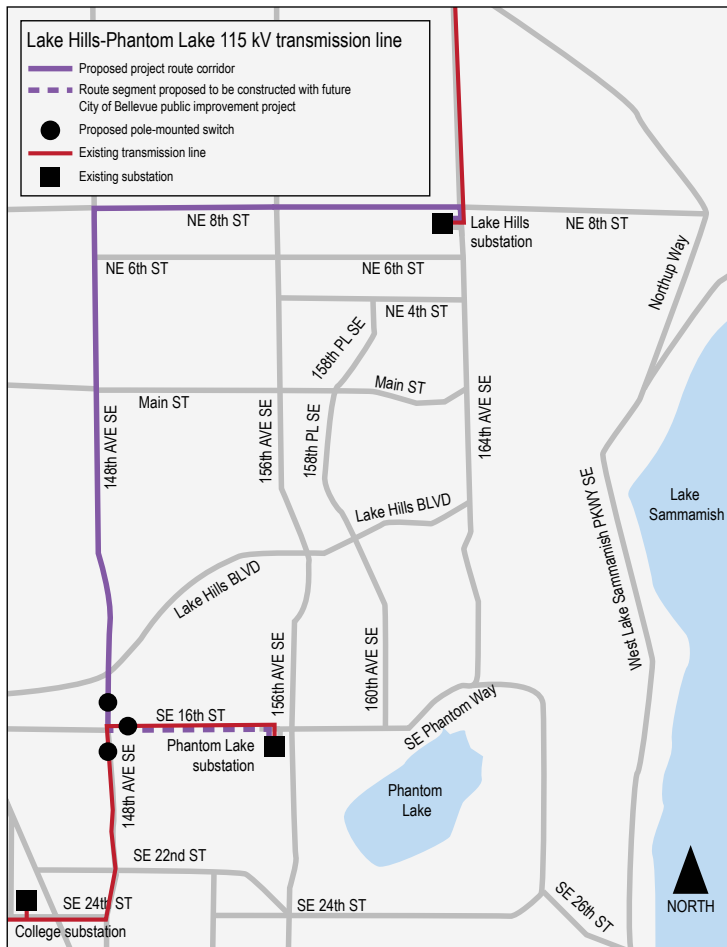
- Lake Hills, College and Phantom Lake substations are served on taps
- Each substation is served by one transmission line. No system redundancy for customers served by these substations in the event of an outage

After Construction



After Construction:

- Lake Hills, College and Phantom Lake substations are "looped"
- Each substation is served by two transmission lines. In the event of an outage on one of the lines, the other line will continue to serve the substation and its customers



After many years of working with the community and the City of Bellevue, PSE has developed a plan to create this needed redundancy and increase reliability by constructing a new 115 kilovolt transmission line between the existing Lake Hills (701 164th Street) and Phantom Lake (1607 156th Avenue SE) substations.

The permitted route is along NE 8th Street and 148th Avenue.

Current status of the project

Construction of this project is scheduled to begin in 2018. We are still in the permitting phase of the project and will soon be seeking easements. Electric line or tree trimming easements will be required from some property owners along the alignment. PSE will notify those customers through a certified letter.

For more information on the project and our process, please visit pse.com/lakehills-phantomlake or contact me at the information below.

Sincerely,

Bob Parker, Sr. Project Manager
majorprojects@pse.com
 888-404-8773