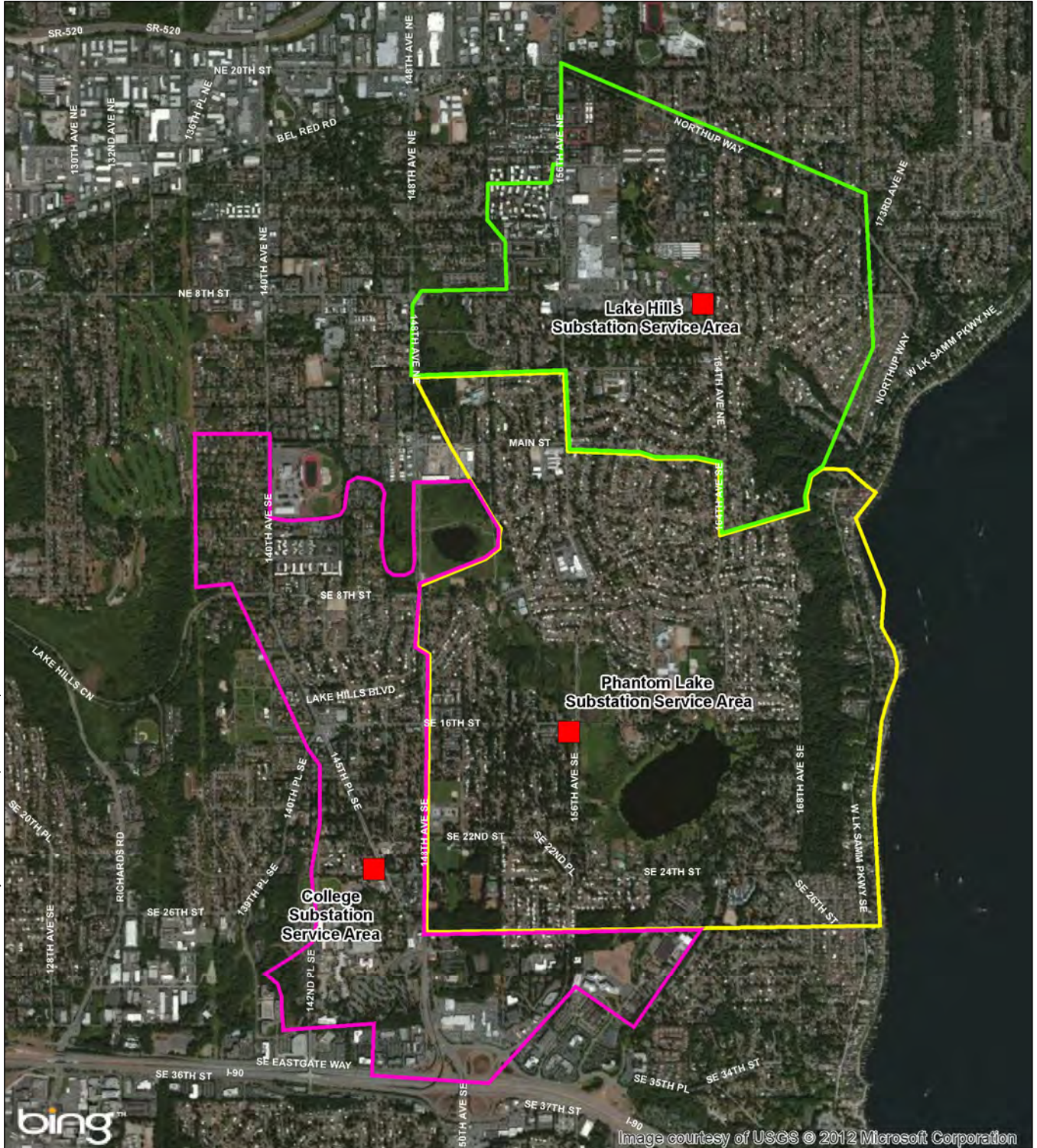


OfficeName: SEAT  
 Path: W:\Port Orchard\Projects\018669100\GIS\MXD\018669100\_ServiceBoundary.mxd  
 Map Revised: September 04, 2012 EL

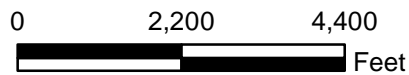


**Service Areas**

-  College
-  Lake Hills
-  Phantom Lake

Reference: Service boundary digitized from PSE map  
 Aerial imagery from ESRI I3\_imagery

Notes:  
 1. The locations of all features shown are approximate.  
 2. This drawing is for information purposes. It is intended to assist in showing features discussed in an attached document. GeoEngineers, Inc. cannot guarantee the accuracy and content of electronic files. The master file is stored by GeoEngineers, Inc. and will serve as the official record of this communication.



**Substation Service Areas**

PSE Lake Hills - Phantom Lake Transmission Line  
 City of Bellevue Alternative Siting Analysis



**Figure 3**