

# Maxwelton substation and transmission line projects

## Improving electric system reliability for south Whidbey Island

Electric customers on south Whidbey Island will see fewer outages of their electric service with Puget Sound Energy's plans to upgrade the local electric system. We are committed to increasing reliability in forested areas particularly susceptible to high winds.

The current configuration of PSE's electrical system on south Whidbey puts customers served by the existing Langley substation at risk of outages due to the lack of redundant transmission or distribution lines. It is currently served by a single transmission line, so if that line fails south of Coles Road, the substation and the customers it serves lose power. Existing distribution lines are not sufficient to shift the electrical load to other existing substations.

To improve reliability and reduce the risk of outages to customers in the area, PSE is constructing the new Maxwelton substation, installing additional distribution lines and rebuilding an existing transmission line.

## Construction schedule and work details

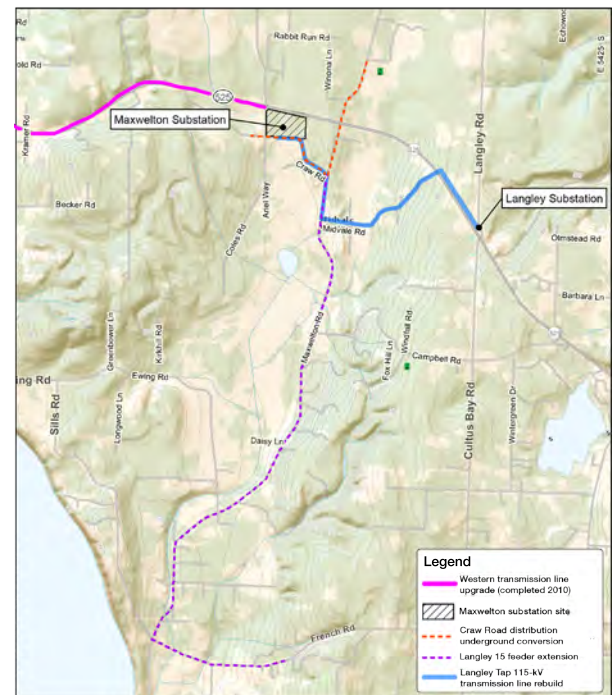
PSE will complete these system improvement projects in phases.

### 2015

- **Maxwelton substation:** Around the first of July 2015, PSE and our contractor crews will begin to construct the new Maxwelton substation to provide a back-up to our Langley substation. We expect construction to be complete and the new substation energized in early 2016.

Construction will include:

- » Remove a small number of trees from the shoulder of SR-525, where a new transmission line will cross the highway
- » Trim and remove trees on PSE property adjacent to SR 525, between the substation site and Coles Road
- » Clear and grade the site to prepare for substation construction
- » Construct concrete foundation and install transformers and electrical equipment
- » Enclose the new substation with a 10'-high wood fence, to screen views
- » Extend existing transmission lines across the substation property, to connect to the new substation
- » Restore substation site, including new fencing and landscaping



- **Fiber Optic Cable:** Also in late 2015, PSE will extend its fiber optic network from Brooks Hill substation to the new Maxwellton substation by hanging a single fiber optic cable on existing roadside poles. This cable will be used only to coordinate and control components of PSE's electrical system, and will never be used or available for general public telecommunications or data services.
- **Craw Road distribution underground conversion:** In preparation for Langley Tap pole replacements (see below) and to protect low-voltage distribution lines exiting the new substation from potential tree damage, we will underground existing distribution lines on Craw Road, between Coles and Maxwellton Roads in 2015. In 2016, we will extend the undergrounding north on Maxwellton Road to the vicinity of the high school campus. It is expected that local temporary lane closures on Craw and later Maxwellton Roads will be required during work.

## 2016

- **"Langley 15" feeder extension:** Planned for 2016, PSE will upgrade an existing single-phase low-voltage line to a higher capacity three-phase line along Maxwellton Road south from Craw Road and extending onto French Road. This will provide line capacity to allow the new substation to back up electric load normally served by Langley Substation, and will greatly improve reliability of electrical service in Langley. It is expected that local temporary lane closures on Maxwellton and French Roads will be required during this work..
- **"Langley Tap" transmission line rebuild:** Once Maxwellton substation and the "Langley 15" feeder are in-service and providing an alternative feed to Langley, PSE can shift electric load off the existing "Langley Tap" transmission line to replace its aging wood poles.

## Completed in 2010

- **Western transmission line upgrade:** In 2010, PSE rebuilt and relocated two miles of our existing 115 kV transmission line from the intersection of SR 525 and Coles Road to a point near the intersection of SR 525 and Useless Bay Avenue.

## PSE's commitment

Since 2008, PSE is committed to working with the community, gaining valuable feedback to aid in planning the electrical upgrades that will improve service for customers in south Whidbey. We held several public meetings to review the project with nearby residents and other interested parties. Valuable feedback from those meetings was incorporated into the project design.

We appreciate your continued feedback and patience throughout this process. We remain committed to providing updates to you and your neighbors and will notify you of important construction milestones and activities. We aim to complete the work with as little disruption as possible.

For additional information or questions about the project, visit [pse.com/maxwelton](http://pse.com/maxwelton) or contact:

Walt Blackford  
Community Services Manager  
Puget Sound Energy  
[walt.blackford@pse.com](mailto:walt.blackford@pse.com)

Jim Kearnes  
Project Manager  
Puget Sound Energy  
[james.kearnes@pse.com](mailto:james.kearnes@pse.com)

[majorprojects@pse.com](mailto:majorprojects@pse.com)  
1-888-404-8773