

Sammamish-Juanita 115 kV Project

Project Update

September 2012

What's New with the Sammamish-Juanita 115 kV Project?

Puget Sound Energy has adopted the stakeholder advisory group's recommended route as the preferred final route. The preferred final route begins at the Sammamish substation in Redmond and ends on Northeast 124th Street in Kirkland. From there the new transmission line will connect with an existing transmission line south of the Juanita substation. The segment of existing line between the connection point and the Juanita substation will need to be reconducted (or rebuilt) to match the capacity of the new transmission line. Figure 1 shows a map of PSE's preferred final route.

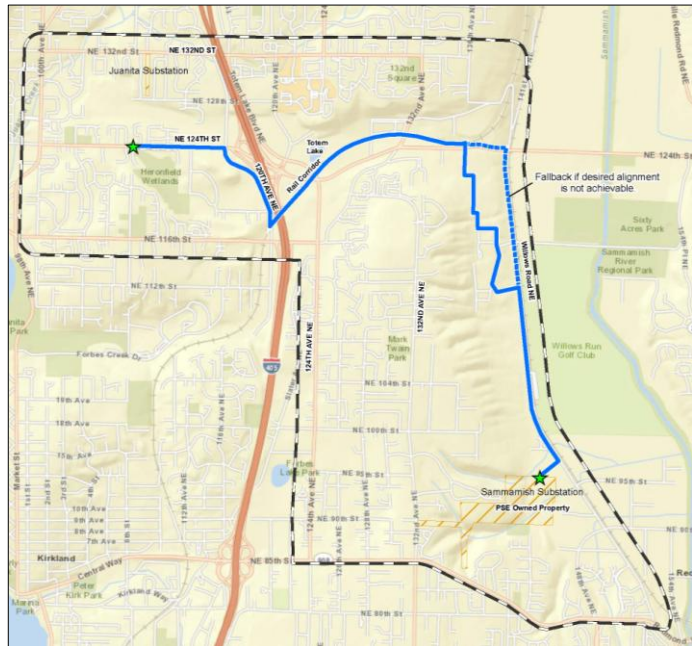


Figure 1. PSE's preferred final route.

The project now moves into the design and permitting process. Read on for more information on the project work to date and next steps.

Project Overview

Customer energy usage at times can strain and/or exceed the capacity of the existing electric system serving Redmond and Kirkland, reducing PSE's ability to reliably serve power to area residents and businesses.

To increase electric system capacity and improve reliability, PSE plans to construct a new 115 kilovolt transmission line from the Sammamish substation (9221 Willows Road NE in Redmond) to intersect with an existing line that crosses NE 124th Street south of the Juanita substation (10910 NE 132nd Street in Kirkland).

The new transmission line will increase electric capacity, reduce the risk for power outages and ensure PSE can continue to supply customers in the northern Redmond-Kirkland area with dependable power for years to come.

Route Development Process

Siting a new transmission line in an urban area is challenging, so PSE committed to working with the community to better understand local issues to consider as we made the alignment decision on a route that meets the needs of PSE's customers and the local community.

Over the past year, we have collaborated with a stakeholder advisory group and consulted with the broader community to develop a community-acceptable route. After working through eight meetings

and hearing from the community at three community meetings and via more than 400 comments, the advisory group recommended a preferred route.

We shared the advisory group’s recommended preferred route with the community via the project webpage and at two community meetings on August 21 and 22, 2012. After taking into consideration the advisory group’s recommended route and the community’s response, we have adopted the advisory group’s recommendation as our preferred final route.

We appreciate the community’s interest and feedback on the project, as well as the hard work undertaken by the advisory group. Community feedback shaped the outcome, which is a route that PSE believes is acceptable to the community and meets the needs of PSE’s customers.

To learn more about the community-involved siting process, review the advisory group meeting notes and materials and community meeting materials available on the project Web page at PSE.com/SammJuan115.

Next Steps

The project now moves into the design and permitting process. During this phase we will review the environmental and engineering conditions to help us determine the project design specifics (e.g., specific pole locations and pole types). We will also work with individual property owners to purchase necessary easements and address concerns by making minor adjustments to the route whenever possible (known as micro-siting).

We expect to submit permit applications in 2013 and begin construction in 2014 (depending on design and permitting schedules). For specific project activities, review the project schedule shown below.

PSE is committed to keeping the community informed of the project’s progress and continuing to engage the community as necessary.

Project Schedule and Activities

Fall – Winter 2012	<ul style="list-style-type: none"> • Work with landowners to purchase necessary easements • Make necessary “micro-siting” adjustments and design the project • Conduct environmental and engineering studies
2013	<ul style="list-style-type: none"> • Continue acquiring easements, designing the project and conducting studies • Submit permit applications, some of which provide additional opportunities for public participation. Below is a list of permits we may need. <ul style="list-style-type: none"> ○ City of Kirkland Process IIA Zoning Permit ○ City of Redmond Site Plan Entitlement Permit (Process II) ○ Washington State Environmental Policy Act determination by Cities of Kirkland and Redmond ○ Washington State Department of Transportation Crossing Permit for Interstate 405 ○ Washington State Department of Ecology National Pollutant Discharge Elimination System Permit
2014-2015	<ul style="list-style-type: none"> • Construct the project • Transmission line begins operating

Learn more

For more information about the project:

- Visit PSE.com/SammJuan115
- Email info@sammjuan115.com
- Call Barry Lombard, PSE Project Manager, at 425-456-2230