

EcoPort Module Installation Guide

For connecting grid-interactive water heaters

What You Will Need:



EcoPort module



EcoPort Antenna

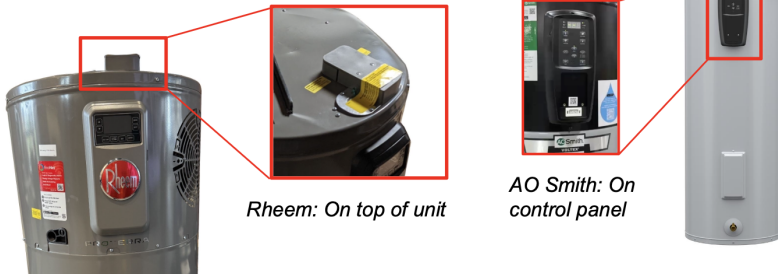


Phillips-Head Screwdriver



1 Remove EcoPort Cover

from your water heater using a Phillips-head screwdriver.



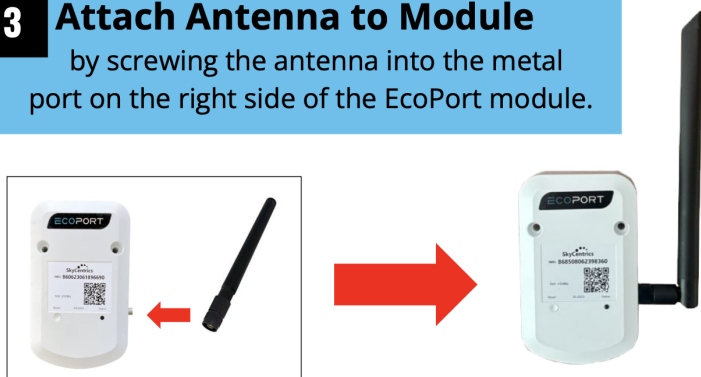
2 Remove Module from Box

And remove rubber port protector from right side of module.



3 Attach Antenna to Module

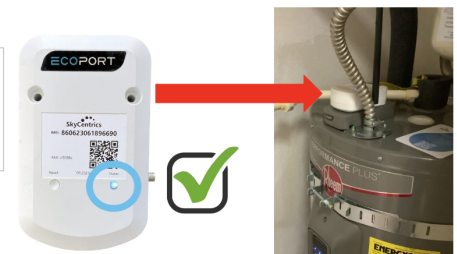
by screwing the antenna into the metal port on the right side of the EcoPort module.



4 Connect EcoPort Module

to the water heater using the EcoPort socket on the water heater or adapter. Secure the EcoPort with the provided screws. Once you see a blue light on the 'Status' LED, you are connected.

Note: It may take a few minutes for your EcoPort Module to connect!



Installation Complete!