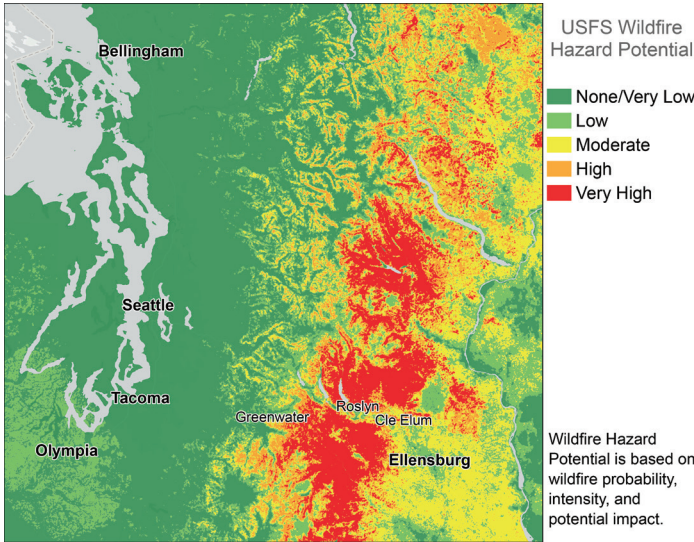




Wildfire preparedness and response



▲ PSE uses a variety of inspection technology

Wildfires have emerged as a growing public safety concern for much of the Western United States.

In response, PSE launched its wildfire program in 2018. Our latest plan for 2022 outlines our year-round efforts to prepare for, and help prevent, wildfires in PSE's service area. Our comprehensive approach includes:



Situational awareness and risk modeling that proactively identifies wildfire risks across our service area. This includes monitoring forecasted and real-time fire weather conditions.



Fault reduction and protection that includes activities such as pre-season inspections and enhanced vegetation management in fire prone areas, covered conductor “tree wire” or undergrounding select power lines, and installing fire-resistant equipment.



Operational procedures and emergency response protocols that are specific to wildfire events and ensure readiness, coordinated response with various entities, and restoration if system damage occurs. Our efforts are in coordination with community and public safety partners as normally occurs in emergency response situations.



Communications and outreach that provides customers and communities—as well as state, county, and local agencies and stakeholders—with current information during fire season.

For the latest information, and to view our full wildfire report, visit pse.com/wildfirepreparedness.

We need your input

Understanding the needs of your community and getting your feedback are part of our planning.

Along with community partners, PSE is hosting community meetings to share how we're working to maintain electric service reliability while reducing wildfire risk. It's your chance to ask questions and learn more about potential risk-reduction tools, like Public Safety Power Shutoffs (PSPS).

You can also share your thoughts with our Wildfire Mitigation and Response Task Force at pse.com/wildfirepreparedness.

What is a Public Safety Power Shutoff?

During high-risk, wildfire weather conditions, some utilities proactively turn off power lines to help prevent wildfires. This is called a Public Safety Power Shutoff (PSPS).

PSE understands that losing power can create inconvenience, hardship, and potential hazards for customers. We are engaging with communities now to get feedback as we develop plans for using PSPS in the future. We consider PSPS a tool of last resort to ensure the safety and security of all communities we serve.

FAQ

What conditions are favorable for wildfires?

The combination of extreme heat, low humidity, dry terrain, high winds, and nearby fuels/vegetation increases wildfire risk.

What if I have trees near power lines?

If you see a tree close to power lines, please let us know at pse.com/trees. We'll send a PSE-certified arborist to investigate at no cost to you.

How do I update my information with PSE, and why is that important?

There may be a time when we need to contact you directly with wildfire-related alerts and communications. You can update your account contact information at pse.com or by calling 1-888-225-5773.

What if I have medical equipment that depends on electricity?

Please call our customer care team at 1-888-225-5773 so we can walk you through the process for notating to your account.

