

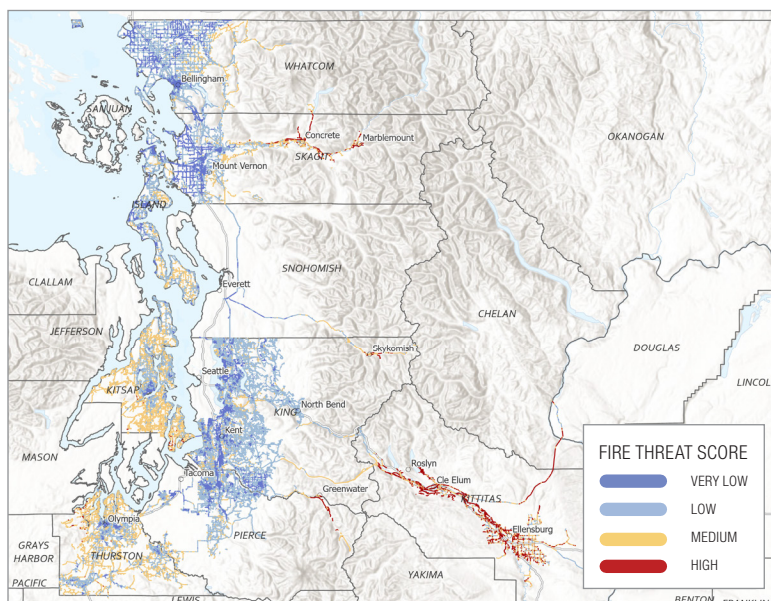


Wildfire prevention and preparedness

Over the past decade, wildfires have emerged as a significant public health and safety concern for much of the Western United States. PSE's **Wildfire Mitigation and Response Program** takes a comprehensive approach to addressing the evolving risk of wildfires to help keep customers and communities safe.

PSE's comprehensive plan includes:

- **Situational awareness** to monitor the electric system and environment around it.
- **Strengthening the electric system** to further reduce the risk of wildfire.
- **Operations procedures** that provide guidelines for the operation of our electric system.
- **Emergency response procedures** to use, if needed, in coordination with local emergency officials.
- **Communication and outreach** to keep customers and impacted communities informed and engaged in our wildfire program.
- **Equity** that's embedded into the planning and implementation of PSE's wildfire mitigation strategies, as well as planning, investments, and strategies across PSE.

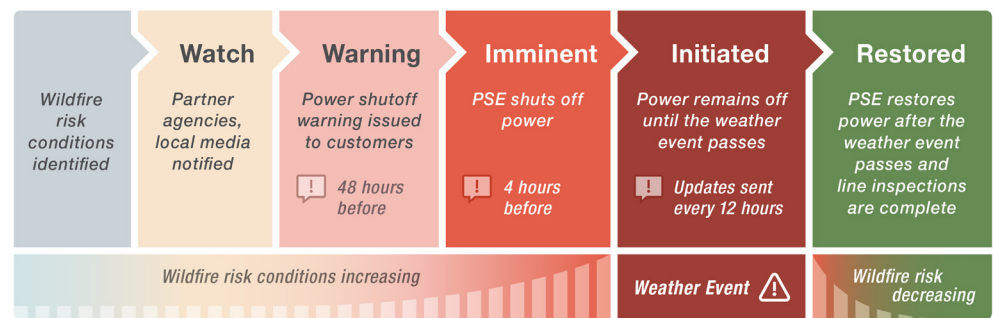


Although wildfires can happen anywhere, this is the latest risk map for prevention measures in PSE's service area.

Public Safety Power Shutoffs (PSPS)

One important fire-prevention measure is a Public Safety Power Shutoff (PSPS), which turns off power lines in areas under extreme fire risk weather conditions. It's a tool to keep customers and communities safe. Learn more at [PSE.com/PSPS](https://www.pse.com/PSPS).

Public Safety Power Shutoff notifications



PSE's year-round wildfire prevention and preparation measures



Vegetation management

Trees and other vegetation that grow too close to power lines can touch the lines or other equipment, causing power outages and potentially creating sparks. PSE's Vegetation Management program regularly inspects power lines throughout our service area and trims or removes hazardous trees and other vegetation. If you see a "danger tree" that's growing too close to lines, please report it at [PSE.com/Trees](https://www.pse.com/Trees).



System strengthening projects

Strengthening projects replace and upgrade equipment to improve the safety and reliability of the electric system. This may include:

- Replacing and upgrading poles, wires, and other equipment.
- Installing "tree wire" (specially-coated overhead wire) in areas of high wildfire risk.
- Installing electrical devices and other equipment that provide for greater operational flexibility.



Strategic undergrounding

As part of our ongoing strategy to reduce wildfire risk, PSE may move some power lines underground. This is called strategic undergrounding, and it will improve resiliency and reduce the impacts of PSPS in areas with the highest risk and need.



Enhanced power line settings (EPS)

EPS make the electric system more sensitive to potential hazards and automatically turn power off when they are present to reduce the risk of wildfire. When elevated fire weather is forecast, PSE may use these safety settings on targeted power lines.

Important to know about EPS:

- Similar to a PSPS, EPS would be implemented on targeted power lines during elevated fire weather conditions; however, outages that result from EPS are not a PSPS.
- Lines with EPS help prevent wildfires by turning off power faster. This can happen when there's a hazard, like a tree branch falling into a power line, which can cause a fire.
- EPS can help keep communities safer, but customers may experience unplanned power outages when these settings are in place.

How PSE customers can prepare for wildfire season

- Similar to winter storm season, create and practice an emergency plan and build an emergency kit.
- Take steps to prepare for a potential Public Safety Power Shutoff. Learn more at [PSE.com/PSPS](https://www.pse.com/PSPS).
- If you have medical equipment in your home that relies on electricity, call PSE's Customer Care team at 1-888-225-5773 to add Life Support status to your account.
- Maintain trees on your property, and create a defensible space by clearing brush or other flammable items from around your home. Report "danger" trees to PSE so they can be trimmed.