



Wildfire Risk Management Program

Puget Sound Energy (PSE) takes a holistic approach to the evolving risk of wildfires by operating and improving our infrastructure to create an electric system that is reliable, resilient, and above all, safe.

PSE's Wildfire Risk Management Program includes our year-round work to prevent wildfires by:

- Investing in projects to strengthen our infrastructure.
- Utilizing tools and new technologies to enhance our situational awareness.
- Monitoring real-time conditions and operating the electric system at varying levels of sensitivity.
- Partnering with emergency responders, local organizations, and our customers to build more resilient communities.

Read our Wildfire Mitigation Plan at [PSE.com/Wildfire](https://www.pse.com/Wildfire)

PSE's year-round efforts to prevent wildfires



Vegetation management

Trees and other vegetation that grow too close to power lines can cause power outages and create sparks, so PSE's Vegetation Management Program regularly inspects power lines throughout our service area and trims or removes hazardous trees and other vegetation.



Strengthening the grid

PSE replaces and upgrades equipment to improve the safety and reliability of the electric system, including regularly inspecting and replacing poles, wires and other equipment, installing "tree wire" (specially coated overhead wire that helps prevent sparks, and strategically undergrounding power lines in areas with the highest wildfire risk.



Wildfire safe operations

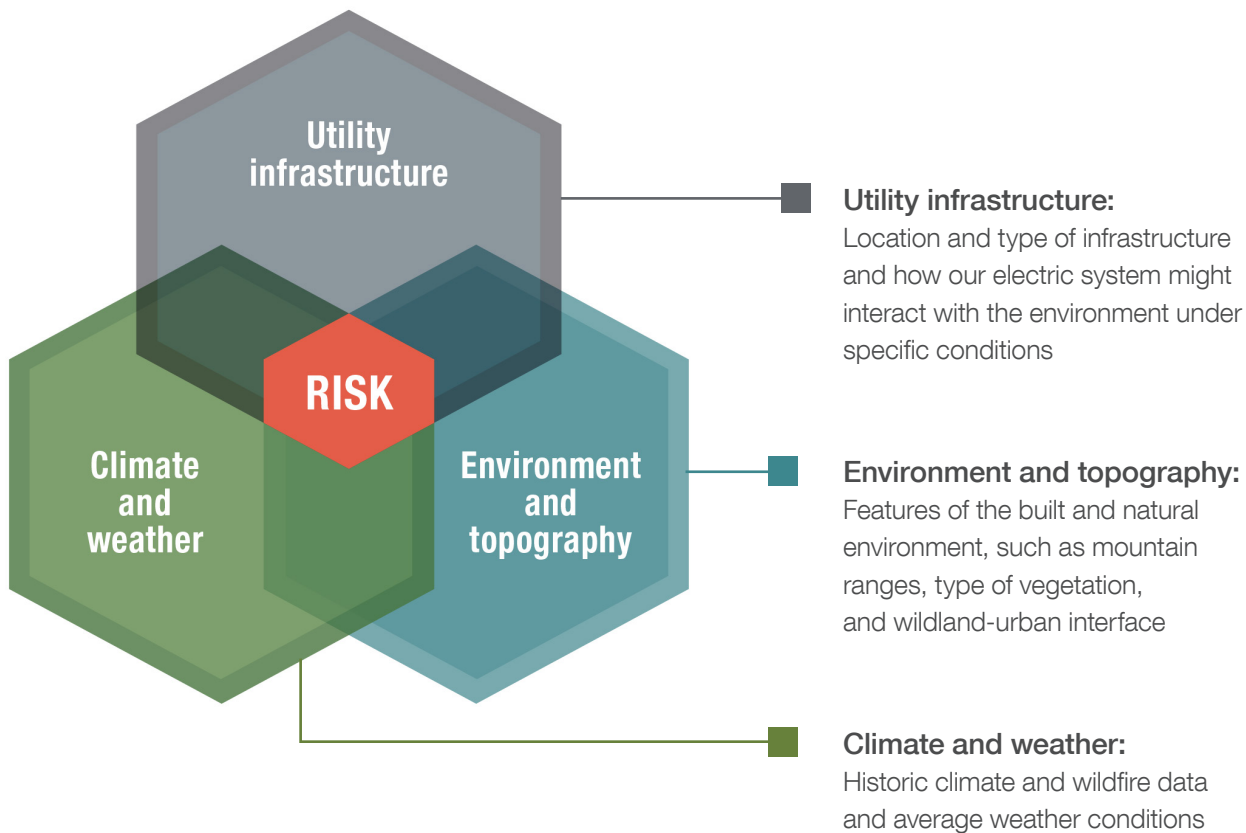
PSE monitors real-time conditions and will operate our electric system at varying levels of sensitivity to prevent wildfires. This includes turning on Enhanced Powerline Settings (EPS) or using a Public Safety Power Shutoff (PSPS) to help keep our customers and communities safe.

[PSE.com/Wildfire](https://www.pse.com/Wildfire)



Understanding risk

Assessing and mitigating risk is a central component of our Wildfire Program. PSE's risk model evaluates three primary elements:



How you can prepare for peak wildfire season

- Create and practice a household emergency plan and build an emergency kit.
- Learn more about how we operate the electric grid to prevent wildfires and keep communities safe, including using Public Safety Power Shutoffs: [PSE.com/PSPS](https://www.pse.com/PSPS)
- Make sure your PSE account contact information is up to date: [PSE.com](https://www.pse.com)
- If you use a medical device in your home that relies on electricity, apply for Life Support status on your account: [PSE.com/Medical](https://www.pse.com/Medical)
- Get your free Wildfire Ready Plan and take action to make your home and community more resilient: wildfireready.dnr.wa.gov

