



Strengthening PSE's grid for wildfire prevention

Building safer, more resilient communities

Reducing wildfire risk year-round



Strengthening the grid: Replacing and upgrading equipment



Vegetation management: Trimming or removing hazardous trees and vegetation that grows too close to powerlines, annually on high-risk lines.



Pre-season patrols and maintenance: Inspecting high-risk lines annually to identify damage that may have occurred during winter storm season and perform maintenance before wildfire season.

Situational awareness investments

- Forecasting and real-time fire risk modeling software
- Meteorologist and daily weather outlooks
- Drones/UAVs to enhance inspection, operations and restoration

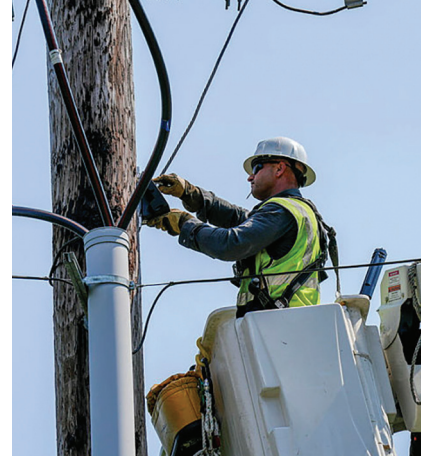
Utilizing new technologies to enhance situational awareness



Pano AI smoke-detecting cameras aid in fire response on suppression.



Weather stations collect more granular and localized data



Gridscopes real-time grid monitoring devices.



Wildfire investment: By the numbers*

In 2025, PSE invested more than \$90 million in grid strengthening projects and situational awareness tools.

- Nearly \$85 million spent on projects such as undergrounding, tree wire installations and other equipment upgrades.
- More than \$5 million spent on AI cameras, weather stations, situational awareness software and other wildfire mitigation technology.

*Data reflective of 1/1/2025 - 12/31/2025