

Pathway to Apprenticeship 101

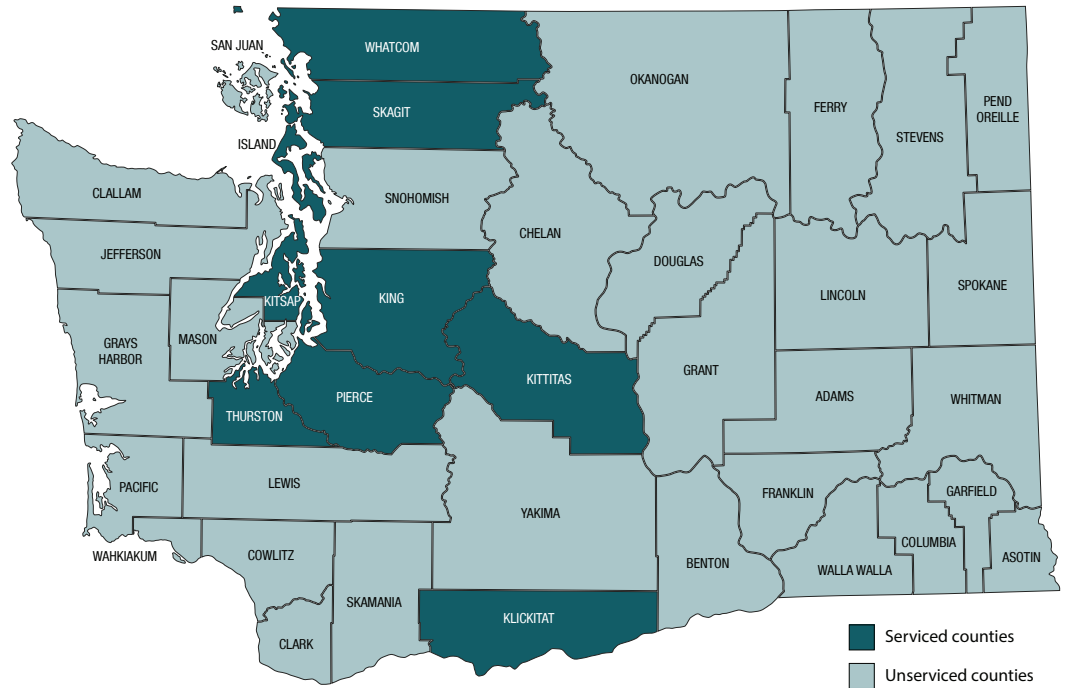


PUGET
SOUND
ENERGY

Puget Sound Energy

Puget Sound Energy (PSE) is a 145 year old company. We provide service to 1.2 million electric customers and 900,000 gas customers. PSE is the largest utility in Washington State, serving 10 Counties. Safety is the number one priority for PSE. Our electrical grid is large and complex, systematic training plans are a top priority.

Our Pathway to Apprenticeship (PTA) program ensures apprentices receive robust training so that duties are performed in accordance with all regulatory compliance obligations.



Pathway to Apprenticeship



Gain high demand skills

Nationally recognized skills in a high demand sector



Earn as you learn

Generous benefits and wage progression



No out-of-pocket costs

Free training and on the job learning



Systematic training plans

State registered and approved training plans

Utility electrical jobs are “hidden gem” type of roles that are highly rewarding.

The utilities sector is one of the leading industry projected to have the highest level of growth within the next decade.

PSE’s PTA offers:

- Structured on the job training
- Related supplemental instruction
- Military veteran benefits

Explore your path forward



Generation

Hydropower and
combustion turbine

Works in power plants
that harness the power
of moving liquid or high
efficiency engines to
generate electricity.



Distribution

Substation wire

Works in substations that
distribute electricity to
homes and businesses.



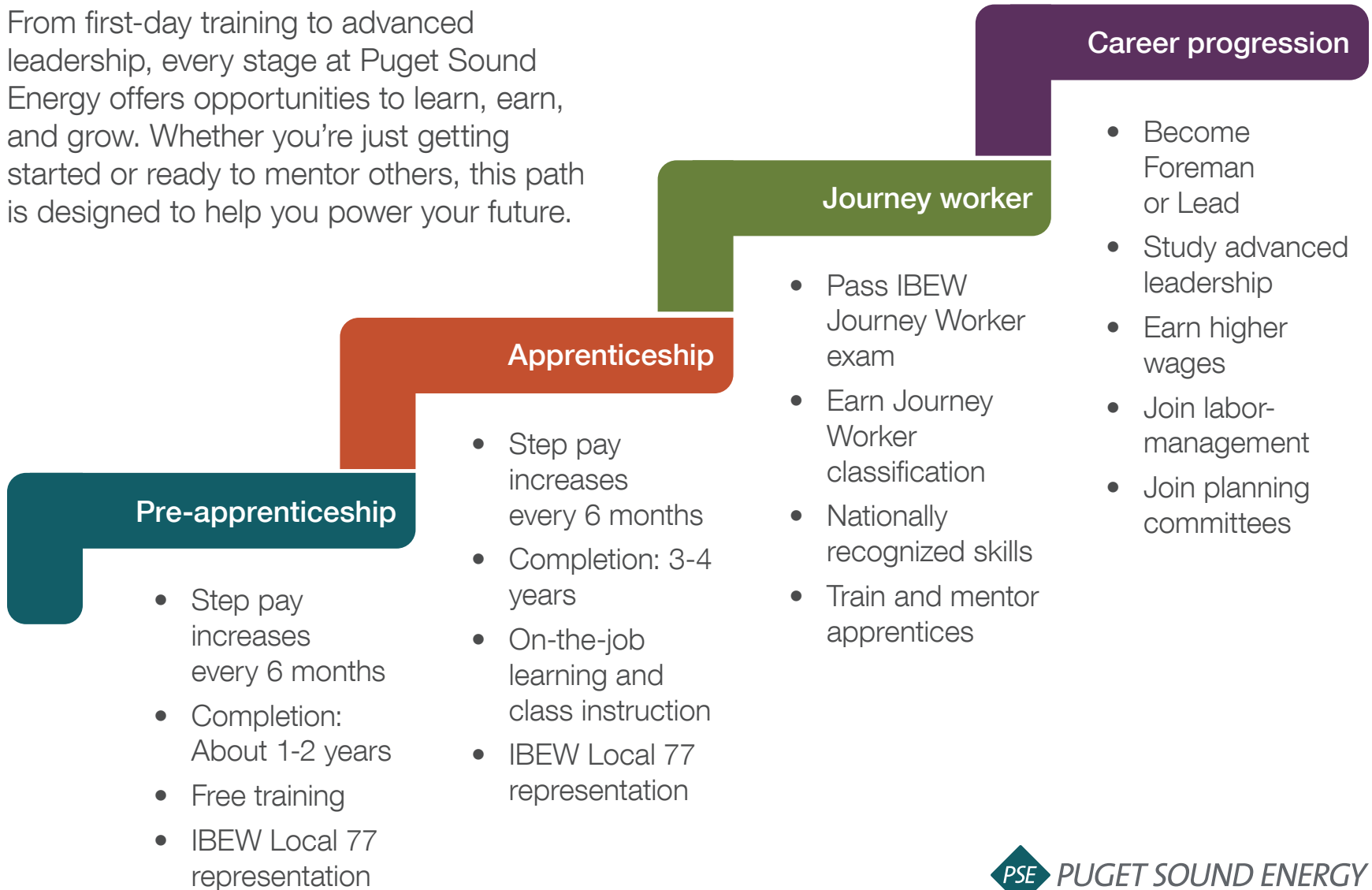
Measurement

Electric meter

Works on electrical meters
that **measure** the **electricity**
provided to, and generated
by, homes and businesses.

Build your career step by step

From first-day training to advanced leadership, every stage at Puget Sound Energy offers opportunities to learn, earn, and grow. Whether you're just getting started or ready to mentor others, this path is designed to help you power your future.



Our selection process

All candidate scores from the NJATC Aptitude Test and the interview will be combined, and each applicant will be issued a total score. Candidates will be placed in a Ranked Pool of Qualified Candidates based on their combined scores.

01

Gather verification documents demonstrating that you meet the minimum qualifications for the NJATC Aptitude Test.

02

Submit an online application on PSE's career website.

03

Pass the NJATC Aptitude Test with a score of "4" or higher out of "9".

04

Interview with a Joint Apprenticeship Training Committee (JATC) approved panel.

05

Placement into a Ranked Apprentice Candidate Pool based on your combined test and interview score.

06

As apprenticeship positions become available, candidates are contacted for interviews based on their ranking in the pool.

07

After the interview, offered employment in a pre-apprenticeship position.

08

The pre-apprentice can bid on apprenticeship opening after required training and completion of the PSE JATC-sponsored Basic Electricity Course.

09

Be indentured as a Meter, Wire, Hydro, or Combustion Turbine Apprentice.

10

After completing the apprenticeship time period and all requirements, be approved by the JATC as eligible to sit for the IBEW Journey Worker Exam.

11

After passing the IBEW Journey Worker Exam, you are eligible to bid for a Journey-level position.

12

Congratulations you have completed all the program requirements! You are now a PSE Journey Worker.

Questions?